

# Wind solar and energy storage power station control system design



## Wind solar and energy storage power station control system design

---

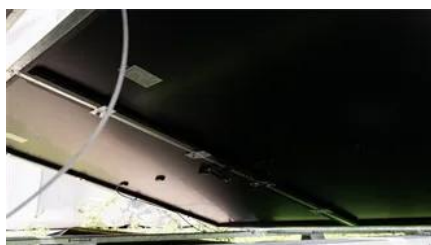


### [Power plant controller design and control logic of 1GW hybrid power](#)

Designing a Power Plant Controller (PPC) for a 1 GW hybrid renewable power plant (Solar + Wind + BESS) is a complex, high-integration task that involves centralized supervision,

### [Control of photovoltaic-wind energy systems using MPC and PSO , Energy](#)

This chapter introduces a novel hybrid energy system that combines PV and wind power, managed by an advanced control strategy that integrates model predictive control (MPC) with



### **Optimal Power Management and Control of Hybrid Solar-Wind**

To show the effectiveness and validity of the proposed strategy, various case studies have been simulated and presented in this work. A comparative study between some metaheuristic

### [Strategic design of wind energy and battery storage for efficient and](#)

This study presents a comprehensive literature review on control strategies used in battery energy storage systems (BESS) to smooth out wind power fluctuations.



### **Validating Performance Models for**



## Hybrid Power Plant Control

Abstract: The need for simple, but accurate performance models of wind turbine generators (WTGs), photovoltaic (PV) plants, and battery energy storage systems (BESS) for various hybrid power plant

## Optimization Method for Energy Storage System in Wind-solar

The volatility and randomness of new energy power generation such as wind and solar will inevitably lead to fluctuations and unpredictability of grid-connected



## [A COMPREHENSIVE REVIEW ON THE DESIGN AND OPTIMIZATION OF SOLAR-WIND](#)

This article offers a complete overview of the layout and optimization of solar-wind hybrid energy systems, overlaying numerous crucial factors to provide a well-rounded understanding of

## Renewable Energy and Energy Storage

Using MATLAB and Simulink, you can develop wind and solar farm architecture, perform grid-scale integration studies, and design control systems for renewable energy systems.



## [Method for planning a wind-solar-battery hybrid power plant with](#)

This study aims to propose a methodology for a hybrid wind-solar power plant with the optimal

contribution of renewable energy resources supported by battery energy storage technology.

### Optimizing the physical design and layout of a resilient wind, solar

First, we introduced a methodology to design and optimize the physical layout of a hybrid wind-solar-storage power plant. This is an important piece to the continued progress of renewable



## Contact Us

---

For catalog requests, pricing, or partnerships, please visit:  
<https://www.bartstudio.biz>