

Why doesn't Xiaomi make communication base station inverters



Overview

The US Department of Energy (DOE) has shared its analysis with energy sector partners following media reports that indicated the presence of undocumented wireless communications in Chinese-made inverters, first broken by Reuters in May 2025. Context: Last month, Xiaomi settled a standard-essential patent (SEP) dispute with Japan's Panasonic (October 25, 2024 ip fray article). The settlement disposed, inter alia, of multiple cases pending in the Unified Patent Court (UPC). What's new: Garland, TX-based Advanced Standard Communication . In communication base stations, since they usually rely on DC power, such as batteries or solar panels, while most communication equipment and other electronic equipment require AC power to operate properly, inverters are almost a necessity. Once it is connected successfully, the indicator keeps blue. The discrepancies were deemed "non-malicious" and "non-intentional" by investigators. It is designed to serve as the brain of agent systems, orchestrating complex workflows, driving production engineering tasks, and delivering results reliably. Future work will extend the analysis to consider the uncertainty of different types of renewable. Communication Base Station .

Why doesn't Xiaomi make communication base station inverters

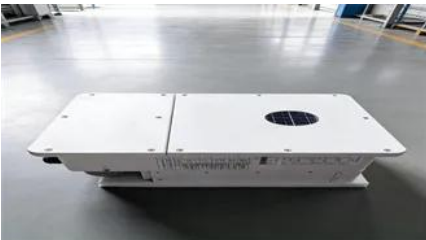


MiMo-V2-Pro , Xiaomi

With MiMo-V2-Pro, we expand the action space of frontier intelligence, generalizing from coding to claw. By scaling both model size and compute, MiMo-V2-Pro is built on a stronger foundation.

Xiaomi Camera Accessories Are NOT NECESSARY , BW500,

This is an update of the review video on Xiaomi Outdoor Camera BW500. Here, i'm proving that camera accessories Solar Panel and Base Station are not really necessary.



Xiaomi Solar Outdoor Camera BW400 Pro FAQ

Q: Why doesn't Xiaomi Solar Outdoor Camera BW400 Pro support 24-hour recording? A: In order to extend the battery life and avoid frequent charging, the camera only automatically wakes up to record

[Chinese-Chinese dispute in UPC: Xiaomi gets sued over former ZTE](#)

A case is pending in the UPC's Munich Local Division (LD) over EP3016464 ("Method for measuring discovery signal, base station, and terminal"). The patent was originally obtained by ZTE,





Working As A Communication Base Station Inverter

In communication base stations, since they usually rely on DC power, such as batteries or solar panels, while most communication equipment and other electronic equipment require AC power to operate

[Rogue communication devices found in Chinese solar power inverters](#)

While inverters are built to allow remote access for updates and maintenance, the utility companies that use them typically install firewalls to prevent direct communication back to China.



Communications Backdoor in Chinese Power Inverters

Over the past nine months, undocumented communication devices, including cellular radios, have also been found in some batteries from multiple Chinese suppliers, one of them said.

[U.S. authorities find no definitive evidence of hidden devices in](#)

U.S. government analysis of Chinese-made inverters has found "no definitive evidence" of malicious wireless functions, according to a report seen by pv magazine examining the scope of



['Rogue' communication devices found on Chinese-made power inverters](#)

One such incident occurred in November, when

solar power inverters in the U.S. and elsewhere were disabled from China, highlighting the risk of foreign influence over local electricity

Contact Us

For catalog requests, pricing, or partnerships, please visit:
<https://www.bartstudio.biz>