

What to do if the wind turbine blades are too long



Overview

The optimization of blade length in response to varying wind regimes involves several methodical steps. When it comes to harnessing the power of wind energy, one crucial aspect often goes unnoticed: the length of wind turbine blades. Wind turbine blades are getting bigger and longer - some now exceed 150 meters in length. Under normal working conditions, these massive blades can deform by more than ten . It's the first question investors, engineers, and logistics managers ask, because blade length dictates swept area, annual-energy production (AEP), and - ultimately - project economics.

What to do if the wind turbine blades are too long



How Long Are Wind Turbine Blades? Sizes, Materials & Trends

Blade length has surged from 15 m curiosities to 115 m powerhouses because bigger rotors lower LCOE and unlock new wind classes. Yet aerodynamics, gravity loads, road clearances,

Exercise: How much do I need every day?

You can do strength training by using weight machines or weights, your own body weight, heavy bags or resistance bands. You also can use resistance paddles in the water or do activities



How Does Blade Length Affect Wind Turbine Efficiency?

This article delves into the relationship between blade length and wind turbine efficiency, examining how changes in this parameter can affect overall energy production.

Why Wind Turbine Blades Are Getting Longer - And What It

Increasing the blades' length increases the swept area, allowing turbines to capture more wind energy. The more wind energy is captured, the more power is generated.



Osteopathic medicine: What kind of doctor is a D.O.?



How Blade Length Affects Wind Turbine Performance

Learn about optimizing blade size for maximum wind energy capture and the balance between longer blades' benefits and challenges.



Weight training: Do's and don'ts of proper technique

You might learn weight training techniques by watching friends or others in the gym, but sometimes what you see isn't safe. Weight training technique that isn't proper can lead to muscle



You know what M.D. means, but what does D.O. mean? What's different and what's alike between these two kinds of health care providers?



Automated external defibrillators: Do you need an AED?

An automated external defibrillator (AED) is a portable device that can be used to treat a person whose heart has suddenly stopped working. This condition is called sudden cardiac arrest.



Cardiopulmonary resuscitation (CPR): First aid

Cardiopulmonary resuscitation (CPR) is an emergency treatment that's done when someone's breathing or heartbeat has stopped. For example, when someone has sudden cardiac

Ileostomy

Can I swim? How do I shower? Do I need to buy different clothes? How will it affect my intimate life? Once you adjust, you'll likely find that it's possible to do many of the same activities you



Triglycerides: Why do they matter?

Why do high triglycerides matter? High triglycerides may contribute to hardening of the arteries or thickening of the artery walls, called arteriosclerosis. This condition increases the risk of

[Model accelerates the design of ultra-long wind turbine blades](#)

To aid the design of ultra-long blades, Yazhen Huang and Mingwei Ge created a computationally efficient model for deformation in long wind turbine blades. The pair started by



[Study Assesses How To Break Barriers To Supersized Wind Turbine Blades](#)

The move toward progressively longer wind turbine blades has been a lasting trend in the industry and has helped reduce the cost of wind energy. But without additional innovation,

Arthritis pain: Do's and don'ts

Arthritis is a leading cause of pain and limited mobility worldwide. There's plenty of advice on managing arthritis and similar conditions with exercise, medicines and stress management. But





[Understanding Wind Turbine Blade Length: A Comprehensive Guide](#)

Discover how wind turbine blade length affects efficiency, energy production, and lifespan in our comprehensive guide to designing and maintaining optimal blades.

How Does The Length Of Blades Affect A Wind Turbine

The number of blades affects wind turbine efficiency and power generation, as longer blades capture more wind energy but come with weight and cost considerations that engineers must



Wind Turbine Blade Length: How Long Is Too Long?

Evaluate the environmental considerations surrounding larger turbines, including noise and visual impact. Learn how blade length factors into the overall cost-effectiveness of a wind farm.

Acute sinusitis: Do over-the-counter treatments help?

Medicine you can get without a prescription may give some relief from acute sinusitis symptoms.

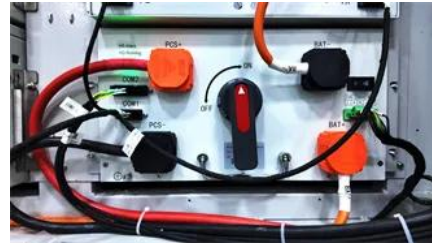


How well do face masks protect against COVID-19?

Face masks can help slow the spread of coronavirus disease 2019 (COVID-19). Learn about mask types, which masks to use and how to use them.

Optimizing Wind Turbine Blade Length for Varying Winds

Ultimately, optimizing blade length tailored to distinct wind regimes drives both efficiency and innovation in renewable energy systems. The continuous interplay between raw data and practical design



Contact Us

For catalog requests, pricing, or partnerships, please visit:
<https://www.bartstudio.biz>