

What are the backup power supplies for mobile base stations



What are the backup power supplies for mobile base stations



[Uninterrupted Communication: Complete Backup Power Solutions for](#)

The core of a backup power system lies in power supply duration and load matching. According to industry standards, remote mountain sites should be equipped with energy storage batteries that can

Top BTS Backup Power Options for Modern Telecom Networks

In this guide, we explore the most widely adopted and emerging BTS backup power options-from legacy VRLA systems to advanced hybrid solar-storage microgrids-helping telecom



What Powers Telecom Base Stations During Outages?

Telecom batteries for base stations are backup power systems using valve-regulated lead-acid (VRLA) or lithium-ion batteries. They ensure uninterrupted connectivity during grid failures

[How to Choose the Right Backup Battery for Telecom Base Stations](#)

Base stations commonly use 12V, 24V, or 48V battery systems. Correct voltage alignment ensures efficiency and prevents equipment damage. 48V is the industry standard for most



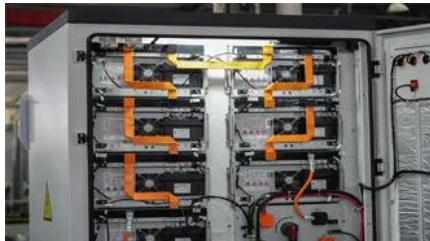
Telecom Base Station Power Backup Solution-WysherESS:Energy



Securing Backup Power for Telecom Base Stations - leagend

This article will explore in detail how to secure backup power for telecom base stations, discussing the components involved, advanced technologies, best practices, and future trends to

Telecom base station battery backup system is a comprehensive portfolio of energy storage batteries used as backup power for base stations to ensure a reliable and stable power supply.



[Do mobile network base stations still use lead acid for backup power?](#)

Mobile network base stations are generally protected against power loss by batteries. My understanding is that they used to use negative 48V DC power, i.e. 24 2-volt lead acid cells in series,

[Telecom Base Station Backup Power Solution: Design Guide for 48V](#)

Discover the 48V 100Ah LiFePO4 battery pack for telecom base stations: safe, long-lasting, and eco-friendly. Optimize reliability with our design guide.



[How to Select the Best ESTEL Battery Backup for Base Stations](#)

ESTEL battery backup systems excel in meeting these challenges, offering an uninterruptible power supply tailored to the needs of telecommunications equipment. By choosing the

Telecom Battery Backup System , Sunwoda Energy

A telecom battery backup system is a comprehensive portfolio of energy storage batteries used as backup power for base stations to ensure a reliable and stable power supply.



Contact Us

For catalog requests, pricing, or partnerships, please visit:
<https://www.bartstudio.biz>