

Uninterruptible power supply wholesale solar energy storage cabinet price in north america



Overview

We offer factory-direct pricing with flexible small-batch MOQ (as low as 1 unit for testing), full customization (branding, voltage tuning, EMS integration), and rapid 30-45 day delivery. Special pricing for dealer accounts! Helped me put together a solar system for a houseboat with two quattro in split phase and PV bank. Fast shipping and great prices. Connor and Stewart are the best! We have ALWAYS had great service and fair pricing from The PowerStore. If you're integrating battery backup into residential or commercial projects, this Energy Storage system is ready for immediate deployment. Learn more about how energy storage . Discover premium 100kWh All-in-One C&I BESS Cabinet with 50kW LiFePO4 hybrid solar integration, IP54 air cooling and true UPS for commercial & industrial sites. Factory-direct wholesale from China Balder Power - reliable, scalable, certified. Why Choose Balder Power 100kWh All-in-One C&I BESS . Highjoule's Indoor Photovoltaic Energy Cabinet delivers seamless power for telecom infrastructure: ✓ Integrated PV + Storage - Harness solar energy and store it intelligently ✓ Ultra-compact indoor design - Fits seamlessly into existing base stations ✓ Smart energy management - Prioritizes clean . This 100kw/215kwh solar battery storage system is loaded with energy storage batteries, PCS, photovoltaic controller (MPPT) (optional), BMS management system, EMS management system, power distribution system, environmental control system and fire control system to fully control the system operating . Namkoo NKB Series 215kwh commercial & industrial energy storage system adopts the all in one design concept. The system's capacity is up to .

Uninterruptible power supply wholesale solar energy storage cabinet



[Energy Storage Cabinet Price Guide: Key Factors & Market Trends in](#)

Wondering what drives energy storage cabinet equipment prices? This comprehensive guide breaks down cost standards, industry benchmarks, and purchasing strategies for commercial buyers.

5kW Cabinet Energy Storage System with Built-In

National Battery Supply offers fast shipping, bulk pricing, and OEM



100kWh All-in-One C&I BESS Cabinet 50kW LiFePO4 Hybrid Solar

Upgrade your energy strategy today with Balder Power's commercial hybrid solar energy storage cabinet. Contact our B2B team for a custom quote, technical drawings, or pilot project support.

PowerStore

PowerStore is a solar supplier that provides a one-stop shop for all things solar and storage. Our wide range of solar products include grid-tied solar products, off-grid solar products, and innovative and



[15kW / 35kWh Hybrid Solar System](#)



[Integrated Energy Storage Cabinet](#)

Equipped with a robust 15kW hybrid inverter and 35kWh rack-mounted lithium-ion batteries, the system is seamlessly housed in an IP55-rated cabinet for enhanced protection against water and dust,

215KWH wholesale energy storage cabinet

For a free quote on our wide variety of designs, just provide your email or phone number in the contact form-we'll get it to you promptly.

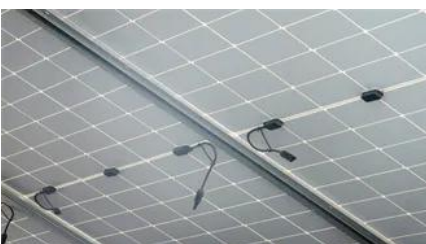


How can I put process into "uninterruptible sleep"?

I'm noticed that process that dumping a core is in uninterruptible sleep, so it can't be killed with SIGKILL, but when I'm trying to emulate this behavior using pipe commands that receives coredump I can

[Safe And Reliable UPS Battery Cabinet, Solar Battery Cabinet](#)

Two popular types are the UPS battery cabinet and the solar battery cabinet, each serving distinct purposes and catering to unique power needs. In this article, we will explore the differences and



Do we need to call set_current_state (TASK

Yes, you must call set_current_state() before calling schedule(), because otherwise the scheduler will not remove the task from the run queue (if you just want to potentially allow other

tasks

how to find out what it is waiting for

When looking at the process with "ps ax" the stat column is "DI" which means "uninterruptible sleep (usually IO)". Is it possible to find out more details on what the process is



[ESS Solar Energy Storage Battery Cabinet 215kwh 430kwh 1MWh All](#)

A commercial energy storage system works by storing excess energy generated by the solar panels during the day in a battery storage system. This stored energy can then be used during times when

Why there is a state called 'TASK_UNINTERRUPTIBLE' in Linux

Another question is, if we enable PREEMPT then the linux kernel become a preemptive kernel so at any place when we are handling a syscall in the kernel mode, it may be preempted so



5kW Cabinet Energy Storage System with Built-In Inverter -

National Battery Supply offers fast shipping, bulk pricing, and OEM branding for installers, contractors, and resellers. If you're integrating battery backup into residential or commercial projects, this Energy

TASK_UNINTERRUPTIBLE and

process threads in linux kernel

I have a running process which has created multiple user mode threads. If the kernel changes the state of the process to TASK_UNINTERRUPTIBLE (or TASK_INTERRUPTIBLE) do the



[Indoor Photovoltaic Energy Cabinet, Base Station Energy Storage](#)

The cabinet accepts direct PV input via MPPT controllers, storing excess solar energy for later use. The EMS prioritizes "solar-first" logic, ensuring that daytime solar generation supports the base station



Many open files leading to uninterruptible sleep "D state"

An uninterruptible D state is entered when a disk driver is seeking for some data in the disk and the disk has to be waited for for the process to continue. Normally a process sticking on a D



How to stop 'uninterruptible' process on Linux?

I have a VirtualBox process hanging around which I tried to kill (KILL/ABORT) but without success. The parent pid is 1 (init). top shows the process as D which is documented as "uninterruptible sl

What are use cases of making Java method UnInterruptible

What are other use cases that we might want to use the same pattern of uninterruptible code?
Edit: I just realised I linked it to incorrect method.



public static boolean



Does read/write blocked system call put the process in TASK

The Uninterruptible state is mostly used by device drivers waiting for disk or network I/O. When the process is sleeping uninterruptibly, signals accumulated during the sleep are noticed when

[Wholesale Energy Storage Cabinet Electric Solar Power Generation](#)

Designed for home energy storage, it supports rack-mounted installation and delivers reliable performance with AC 120V/220V output voltage. Shipping fee and delivery date to be negotiated.



Contact Us

For catalog requests, pricing, or partnerships, please visit:
<https://www.bartstudio.biz>