

UPS battery cabinet protection grounding



UPS battery cabinet protection grounding



Eaton UPS fundamentals handbook

From plug and receptacle charts and facts about power problems to an overview of various UPS topologies and factors affecting battery life, you'll find a wealth of pertinent resources designed to

Guidelines for Earthing in UPS installations

The frame of the UPS should be connected to the neutral of the UPS and then to a nearby earth electrode in order to create an effective TNS earthing system at the UPS itself for avoiding neutral to



[7 grounding](#), [8 remote battery cabinets/racks](#), [9 battery wiring](#), [GE](#)

protection is required to be installed per the National Electrical Code. Over-current protection is needed also if the battery cabinets are separated from the UPS. See the over-current protection ratings of the

Galaxy VS UPS Systems Earthing Principles

For safety reasons proper UPS earthing is a must in case of a short circuit ensuring that a loop circuit is established for the fault current to return to its origin and thereby make the OCPD operate.



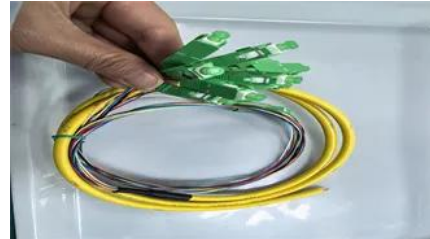
Earthing is a Critical Safety Feature in UPS Systems



Overview of Grounding of APC UPS Power Supply Unit (part 2)

The APC UPS body, its casing, battery cabinet (rack), etc. need to be connected to the electrical grounding device using grounding wires. Generally speaking, the UPS body does not

Earthing (or grounding) is a critical safety feature in Uninterruptible Power Supply (UPS) systems. It ensures the safe operation of the UPS and connected devices by providing a path for



Connecting UPS Grounds and Neutrals , EC&M

A grounding system allows circuit protection to clear a ground fault, and provides paths for diverting surge current away from the UPS and for removing undesirable currents from the critical load.

UNDERSTANDING UPS SYSTEMS AND BATTERIES

On battery cabinets, the disconnect switch should be mounted in the door to allow the battery to be disconnected from the UPS before the door is opened. This best practice is intended to protect a



[Preferred battery cabinet grounding configuration. Vertiv Liebert](#)

Whether the battery system is open-rack or cabinet, the metal rack parts or cabinet must be grounded to the UPS module ground bus. Figure 7 illustrates how a simple, one-cabinet system would be

[System earthing arrangements for installations comprising UPSs](#)

All installations satisfy the applicable requirements because the equipment is housed in cabinets providing a degree of protection IP 20. This is true even for the battery when it is housed in



Contact Us

For catalog requests, pricing, or partnerships, please visit:
<https://www.bartstudio.biz>