

UAE Server Rack 42U Product Manual



UAE Server Rack 42U Product Manual



42U GR800-Series Black Network & Server Cabinet 800 x 1170mm

A distinctive, robust cabinet solution that supports and protects rack-mount servers, storage and network equipment in multi-tenant and enterprise data centers, computer rooms and network facilities.

STARTECH 42U QUICK START MANUAL Pdf

View and Download StarTech 42U quick start manual online. 2-post server rack. 42U racks & stands pdf manual download. Also for: 2postrack42.



[42U Enterprise Rack and Enterprise Expansion Rack: Installation](#)

This document contains general installation instructions for the IBM 42U Enterprise Rack and IBM 42U Enterprise Expansion Rack cabinets. Always read the documentation that comes with your server or

42U Adjustable 4 Post Open Frame Server Rack

Please ensure that the rack is fully assembled with all included parts and fasteners before attempting to mount any rack equipment. Failure to install and fully tighten any hardware could severely



[HPE 42U 800mmx1075mm G2 Enterprise Shock](#)



Server Rack Cabinet , 42U

Product installation and/or mounting should be completed by a certified professional as per the local safety and building code guidelines. Cables (including power and charging cables) should be placed



SmartRack SRX42UBWDEXP

Instructions for use Server SmartRack SRX42UBWDEXP - Tripp Lite. Your guide and instructions for using your device.



42U Server Rack Cabinet 800mmx1000mmx2200mm , Dubai, UAE

[Rack , HPE UAE Store](#)

Universal rack design compatible with all HPE rack mount products including servers, networking, and storage. Front & rear doors, keys, and hardware kit included.



ER8202

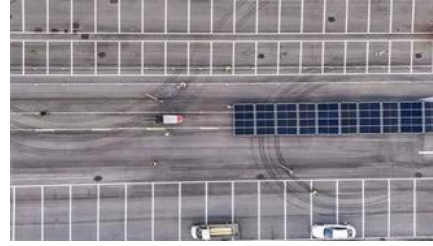
This rack comes in 800mm Width & 1000mm Depth, with Roof, keys, levelling feet, casters, side panels, mounting hardware, PDU mounting brackets and without bottom.



42U Data Center Rack Dubai and Pakistan

A 42U data center server rack, designed with frames and doors, displays a rectangular parallelepiped shape and operates on the floor. This structure offers an ideal environment and safety for the efficient

XForm Floor Stand Server Rack Cabinet (42U)
800mm (W) x 1000mm (D) x 2000mm (H) 42U
come with 1 Shelf + 4 Fan + 2pcs vertical cable
manager in front side. 2pcs vertical cable



Contact Us

For catalog requests, pricing, or partnerships, please visit:
<https://www.bartstudio.biz>