

The alarm signal of the energy storage monitoring system is



Overview

In energy storage applications, the EPO alarm fulfills a pivotal role in safeguarding physical infrastructure, equipment, and personnel. This system monitors various parameters such as temperature, voltage, and current to identify abnormalities or impending failures. The integration . signals to the resident battery management and fire alarm systems. The BMS continually monitors .

The alarm signal of the energy storage monitoring system is



[Fire Protection for Lithium-ion Battery Energy Storage Systems](#)

Aspirated smoke and off-gas detection systems
Lithium-ion battery cabinet protection
Siemens aspirated smoke and Off-Gas Particle detection
How does ASD "Off-Gas Particle" (OGP) detection work?
Venturi bypass flow
Insect filter Chamber flow
Dust
Intelligent Classification of Airborne Particles
Advantages of using blue and infrared light scattering
Easy Installation and Integration
Low Maintenance and Long Product Lifecycle
Features and Benefits
Applications
As its name implies - "aspirated" smoke and off-gas detection systems use an "aspirator" mounted in a detector unit. The detector connects to a sample pipe network mounted within the area or object being protected. Using the suction from the aspirator, air is continuously sampled and transported to the detection chamber for analysis for particles
See more on [assets.new.siemens](#)
Victron Energy[PDF]

Lithium Smart Battery Manual - Victron Energy

The BMS receives an alarm signal from a battery cell
If the system contains multiple batteries, all battery BMS cables are connected in series (daisy chained). The first and the last BMS cable is connected

[A comprehensive understanding of the battery monitoring system](#)

This article will introduce in detail the battery monitoring system, the core part of the energy storage system that improves the efficiency of the energy storage system and avoids potential risks.



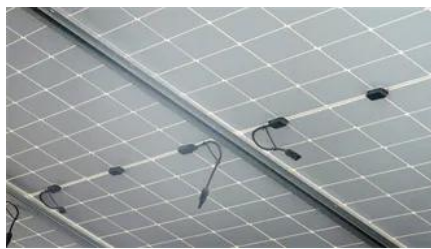


[Safety warning of lithium-ion battery energy storage station via](#)

Here we propose a safety warning method for MW-level LIB stations through venting acoustic signal, with the advantages of fast implementation, high sensitivity and low cost.

[Battery Energy Storage System Monitoring: How you can Track Your Energy](#)

Battery operation monitoring platforms play a critical role in maintaining energy storage systems' efficiency, safety, and reliability. Their real-time data analysis, intelligent alarm systems,



Understanding Energy Storage Systems: The Critical Roles of

BMS can not only monitor the temperature and charge and discharge status of the battery in real time, but also diagnose faults and predict the battery life and maintenance needs

[A monitoring and early warning platform for energy storage systems](#)

This article focuses on the safe operation of lithium battery energy storage power stations and develops a data monitoring and safety warning platform for energy storage systems.



Lithium Smart Battery Manual

The BMS receives an alarm signal from a battery cell. If the system contains multiple batteries, all battery BMS cables are connected in series (daisy chained). The first and the last BMS cable is connected

Energy Storage Systems Practice Test

A Supervisory Signal only alerts when there is a fire emergency. A Supervisory Signal monitors the operational status of safety devices in energy storage systems, ensuring they function correctly to



Battery Energy Storage System Key Components Explained

It implements safety procedures to protect against thermal runaway, short circuits, and various other dangerous problems. This is accomplished through algorithms and hardware that

[Fire Protection for Lithium-ion Battery Energy Storage Systems](#)

Since December 2019, Siemens has been offering a VdS-certified fire detection concept for stationary lithium-ion battery energy storage systems.* signals to the resident battery management and fire



What is the energy storage epo alarm? , NenPower

In energy storage applications, the EPO alarm fulfills a pivotal role in safeguarding physical infrastructure, equipment, and personnel. This system monitors various parameters such as

Contact Us

For catalog requests, pricing, or partnerships, please visit:
<https://www.bartstudio.biz>