

# Sydney photovoltaic panel angle



**Efficient  
Higher Revenue**

- Max. Efficiency 97.5%
- Max. PV Input Voltage 600V
- 150% Peak Output Power
- 2 MPP Trackers, 150% DC Input Oversizing
- Max. PV Input Current 16A, Compatible with High Power Modules



**Intelligent  
Simple O&M**

- IP66 Protection Degree: support outdoor installation
- Smart I-V Curve Diagnosis Function: locate PV string faults accurately and automatically detect faults
- DC & AC Type II SPD: prevent lightning damage
- Battery Reverse Connection Protection



**Flexible  
Abundant Configuration**

- Plug & Play, EPS Switching Under 10ms
- Compatible with Lead-acid and Lithium Batteries
- Max. 6 units Inverters Parallel
- AFCI Function (Optional): when an arc-fault is detected the inverter immediately stops operation



## Overview

---

Sydney, New South Wales is located at a latitude of -33. Here is the most efficient tilt for photovoltaic panels in Sydney: Your photovoltaic panels need to be angled facing north. Gains are estimates based on modeling. The right tilt ensures panels directly face the sun, maximizing energy . Our solar panel angle calculator takes the guesswork out of panel positioning, suggesting panel tilt angles based on your location's latitude and your willingness to reposition based on the sun's seasonal dance across the sky. In Australia, and the southern hemisphere, rooftops that face the north sun perform best and generate the most energy. This leads to better energy yields .

## Sydney photovoltaic panel angle

---



### [Roof Not North-Facing? How to Optimise Solar on Any Sydney Home](#)

Discover strategies to maximise solar efficiency on non-north-facing roofs in Sydney. Learn tips to optimise solar panels for any home orientation.

### Solar PV Analysis of Sydney, Australia

Assuming you can modify the tilt angle of your solar PV panels throughout the year, you can optimize your solar generation in Sydney, Australia as follows: In Summer, set the angle of your



### Solar Panel Angle Calculator

Our solar panel angle calculator takes the guesswork out of panel positioning, suggesting panel tilt angles based on your location's latitude and your willingness to reposition based on the sun's

### Solar panel tilt and orientation in Australia

The ideal situation is when the sun is hitting the panels at a perfectly perpendicular angle (90?). This maximizes the amount of energy striking the panels and being produced.

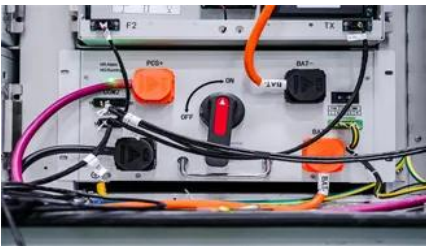


### Panel Tilt Angles Sydney Brisbane



### [Solar Panels and Roof Orientation: How to Get the Best Results in NSW](#)

In New South Wales, the ideal angle usually aligns closely with your location's latitude for optimal sunlight exposure. ? A tilt angle between 20? and 30? is considered optimal. ? Panels should ideally



### **Solar Panel Angles for Sydney, New South Wales, AU**

Here is the most efficient tilt for photovoltaic panels in Sydney: Your photovoltaic panels need to be angled facing north. If you're mounting the photovoltaic panels at a stationary angle, such as on your



### **Melbourne**

Discover the best panel tilt angles in Sydney, Brisbane & Melbourne to boost solar battery performance & efficiency. Advice by Solar Rains.



### **Optimal angle for solar panels in Australia**

The ideal angle for solar panels in Australia is usually equal to the latitude angle of the location of the property. This means that for best results, the roof pitch of your property should ideally be equal to



### **Which Solar Panel Direction (Orientation) Is Best?**

Discover which way your solar panels should face for maximum power. Expert advice on which solar module directions work, the orientations that don't and the impact on electricity

generation.

## **Optimal solar panel tilt angle in Sydney , Size.Solar**

Find the best solar panel tilt angle for Sydney to maximize your energy production. Get year-round, winter, and summer tilt recommendations.



## **Contact Us**

---

For catalog requests, pricing, or partnerships, please visit:  
<https://www.bartstudio.biz>