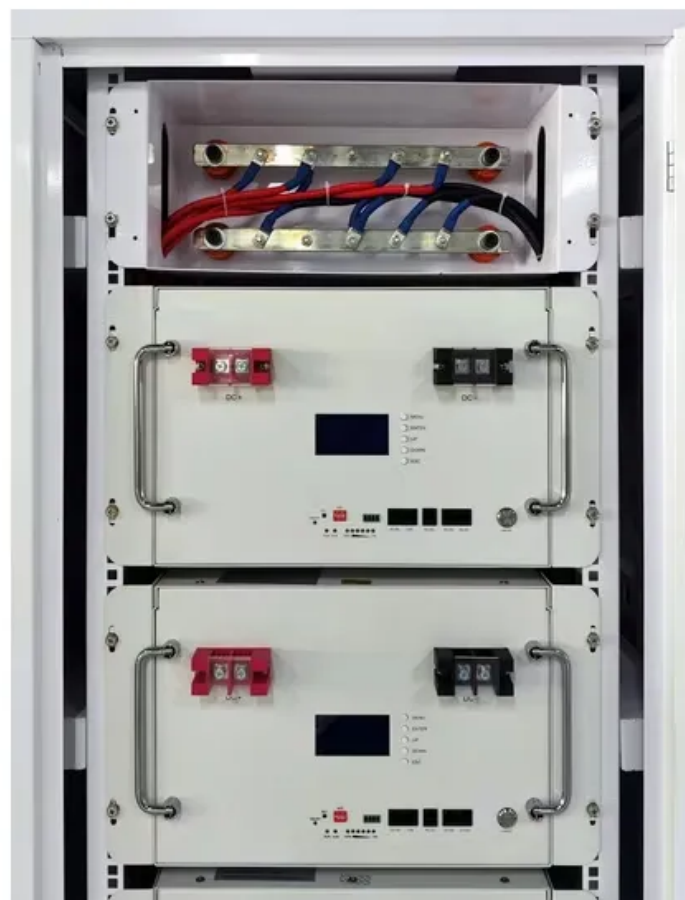


Solar inverter shutdown record table



Overview

This guide covers what actually changed between cycles, the two compliance pathways you're choosing between on every job, which installs qualify for rapid shutdown exemptions under the 2023 NEC, and what your plan set needs to include to clear review the first time. Clarified that all curtailments are considered reserve shut down hours. Term was not . Solar PV labeling requirements are the mandatory markings, placards, and directories that NEC Article 690 Part VI requires on every permitted solar installation. Under NEC 2023 (or 2020/2017 in jurisdictions that have not yet adopted the latest cycle), every residential and commercial PV system . In the rapidly growing solar energy industry, understanding the correct photovoltaic box inverter power supply shutdown sequence is critical for system safety, equipment longevity, and compliance with international electrical standards. Use the filters or search bar in the Library to find what you need quickly. GreenLancer supports solar . The typical system of Rapid Shutdown is as shown in figure 1. When the system is power on, the transmitter starts working.

Solar inverter shutdown record table



[Photovoltaic Box Inverter Power Supply Shutdown Sequence: Best](#)

In the rapidly growing solar energy industry, understanding the correct photovoltaic box inverter power supply shutdown sequence is critical for system safety, equipment longevity, and compliance with

Start-Up and Shutdown Sequence For RD1 Solar Project

Start-up and Shutdown Sequence for RD1 Solar Project_fcc0a062-A897-4f42-Be39-1b3d9ce34c98 - Free download as Excel Spreadsheet (.xls / .xlsx), PDF File (.pdf), Text File (.txt) or read online for free.



GoodWe shutdown solution

With GoodWe remote shutdown function integrated in the inverter, it is safe and efficient to shut down the inverters in a distant spot by a switch for the sake of stability of grid and security of owners.

GADS Solar Generation

Introduction The GADS Solar Generation (GADS-S) -Data Reporting Instructions were developed to assist plant personnel in reporting information to NERC's GADS Solar Reporting

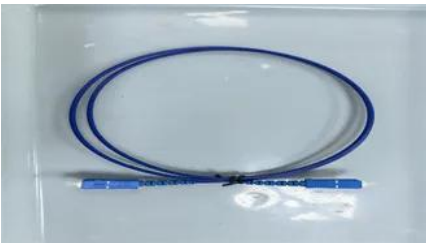


Standards & Tools Library



Solar PV Labeling Requirements: NEC 690 Complete Guide

The rapid shutdown placard is the most scrutinized label in any residential solar permit plan set. Under NEC 690.12, PV system circuits installed on or in buildings must include a rapid



User Manual Logger1000A/Logger1000B Data Logger User

For SUNGROW inverters, establish a connection with the Logger1000 using either the inverter's RS485 terminal block or RJ45 port, depending on the actual setup and requirements.



Solar Rapid Shutdown Requirements NEC

Search, view, and download MCS Standards & Tools for all renewable technologies, including solar and heat pumps. View previous MCS Standard documentation in our archive.



How to startup and shutdown sequence of the inverter?

In the off-grid solar system, the correct startup sequence and shutdown sequence of the inverter are very important. Wrong operation may cause damage to the inverter.



Technical Information

In PV systems with multiple inverters and SunSpec rapid shutdown, attempting to start up inverters one at a time may result in some inverters issuing warning event message 9034 when starting up.

690.12 for Installers

What Solar Rapid Shutdown Actually Does The core issue is simple. DC conductors between your modules and inverter stay live as long as there's sunlight. Firefighters performing vertical ventilation



Contact Us

For catalog requests, pricing, or partnerships, please visit:
<https://www.bartstudio.biz>