

# **Solar cabinet system is far away from the battery**



## Solar cabinet system is far away from the battery

---



### [How Far Can Solar Panels Be from Battery and Other Components?](#)

It's crucial to take into account the distance between the solar panels and other system components, like the battery and inverter. As a general guideline, it's recommended to keep the

### How far from inverter can batteries be?

You'll lose 20% of the battery capacity, but the lifetime will be substantially increased, and the BMS won't have to do very much to protect the battery. Another consideration is only discharging



### Outdoor Solar Battery Cabinet Installation Guide: Ensuring

This guide provides step-by-step instructions on how to install your R-BOX-OC outdoor solar battery cabinet, including site selection, assembly, wiring, and system testing.

### [Solar Panel Distance \(Battery + Charge Controller + Inverter/House\)](#)

What Is Power Loss?How Far Can Solar Panels Be from Battery?How Far Away Can Solar Panels Be from Inverter?Do You Need An Inverter For Solar Power?How Far Apart Should Solar Components be?How Far Can Solar Panels Be from A House?How Far Can You Run Solar Panels?How Far Apart Should Solar Panels be?Generally,



20-30 feet is the ideal distance between a solar panel, such as an array, and the solar battery backup supply. The longer the wire from the solar panel to the battery, the more energy lost in transport. The amount of energy lost also depends upon the gauge or thickness of the wire. Thicker wires lose less energy. Thinner wires lose more. See more on solvoltaics portablesolarexpert

## Guide to the Right Distance between Solar Panels and

The distance between solar panels and battery can make or break a setup. Use these charts to properly configure your solar panel system.



### Solar Panel Inverter Distance: How Far Can They Be from Your

This makes them perfect for setups where the inverter and battery are far from the main electrical panel, such as a guest house 100 feet away. With two Victron Quattro inverters, your system can better

### [Solar Panels And Battery Distance: Key Factors For Optimal Setup](#)

To optimize solar panels and battery setups, consider minimizing the distance between these components. A shorter distance reduces line losses and enhances energy efficiency.



### Where do you keep your batteries / inverters? Outbuilding vs

Big gap between R12 and R60 for a battery room-in-outbuilding setup. The latter would probably mean very minimal heating, even on the coldest of days, but might require some notable forced ventilation

## Battery Location Guidelines

Correct battery placement is critical to ensuring safety, system performance, and long-term reliability. Following Australian Standards (AS/NZS 5139) helps reduce risks and ensures compliance with local

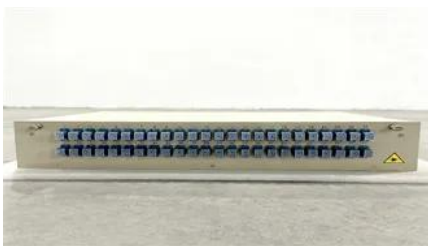


## Guide to the Right Distance between Solar Panels and Battery

The distance between solar panels and battery can make or break a setup. Use these charts to properly configure your solar panel system.

### [Solar Panel Distance \(Battery + Charge Controller + Inverter/House\)](#)

Generally, 20-30 feet is the ideal distance between a solar panel, such as an array, and the solar battery backup supply. The longer the wire from the solar panel to the battery, the more



## Solar & Energy Storage Enclosures: Design Guide , topcabinet

The enclosures that actually perform in solar and BESS (Battery Energy Storage System) applications are purpose-designed from the start, with material selection, ventilation strategy, and

## Contact Us

For catalog requests, pricing, or partnerships, please visit:  
<https://www.bartstudio.biz>