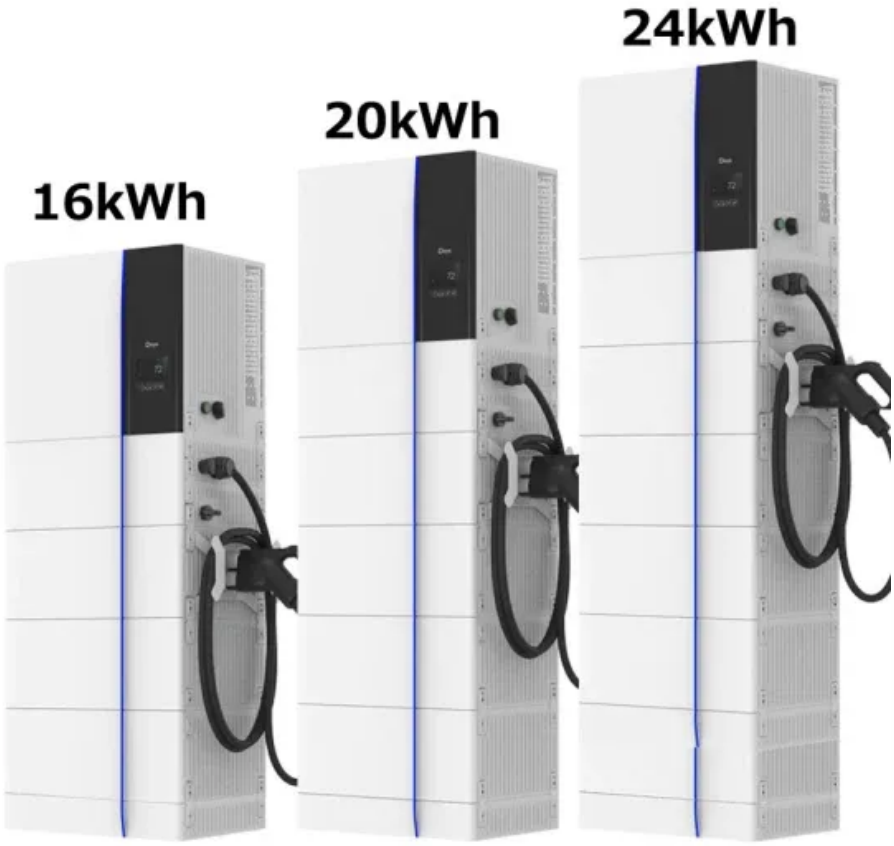


# Power Storage Cabinet 600mm Deep



## Power Storage Cabinet 600mm Deep

---

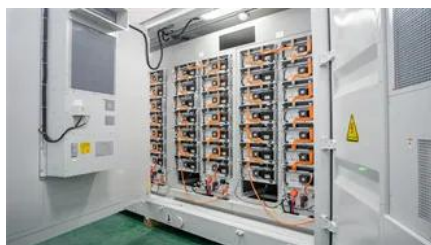


### 6u Datacel 600mm Deep Data Cabinet/ Data Rack

6u Datacel 600mm Deep Data Cabinet/ Data Rack, multitude of Network Cabinet factories, Cabinet wholesalers, distributors & traders. Get Latest Price / trusted supplier List.

### How to force Power BI service to use Local timezone

Both approaches work OK in Power BI desktop report, However once I published to Power BI service and after several refreshes (initially it was NZ time), the time turn back to UTC time. I don't



### formatDateTime in Power Automate Desktop

You are confusing Power Automate with Power Automate Desktop. The link you provide is for Power Automate, so those functions won't work in the PADesktop. There is an action named

### Power Automate

I signed out and in multiple times in "power automate". I also opened the "sharepoint app" in Office365 (whatever you're supposed to do with it) which worked fine. The sharepoint connector in



### What is the C++ function to raise a number to a power?



### **12U 600mm Wide x 600mm Deep IP65 Wall Mount Outdoor Cabinet**

AZE's 12U Wall mount Outdoor Cabinet are designed to protect your sensitive network equipment from harsh environments, with waterproof and dustproof features to safeguard it from the elements, while

Raise a floating point to power 1/3 (cube root)  
There is also dedicated function for that, just call `std::cbrt`. Raise integer constant 2 to a positive integer power Use a left shift `<<` with 1 as base. The exponent



### **600mm Depth Rack Cabinets**

Find high-quality 600mm depth rack cabinets for your data center. Safewell and Geteknet offer durable, secure, and versatile solutions for your networking needs.

### **APC NetShelter 6U Wallmount Rack Enclosure Server Cabinet**

Featuring a wall-mountable design for optimal efficiency in areas with limited floor space, this 6U server rack or network rack cabinet has an optional 23.62-inch (600mm) depth that is ideal for housing



### **600mm Deep Wall Mount Data Cabinets**

Our range of 600mm Deep Wall Mount Data Cabinets offer great quality at a very reasonable price. A 600mm Deep Wall Cabinet provides the flexibility to house both desktop and 19" rack-mount devices

### 600mm Wide x 600mm Deep Data Cabinets & Server Racks , Comms

Explore the range of 600mm Wide x 600mm Deep Network Cabinets & Server Racks available at Comms Express - Free Delivery Available To Buy Online Today.



### APC NetShelter 6U Wallmount Rack Enclosure Server

Featuring a wall-mountable design for optimal efficiency in areas with limited

### Running Python scripts in Microsoft Power Automate Cloud

I use Power Automate to collect responses from a Form and send emails based on the responses. The main objective is to automate decision-making using Python to approve or reject the



### Extract Value from Array in Power Automate

Extract Value from Array in Power Automate  
Asked 1 year, 5 months ago Modified 1 year ago  
Viewed 8k times

### How to Read CSV file using Power Automate?

You can retrieve the contents of the CSV file using the Get file content action in Power Automate/Microsoft Flow, and then using the Parse CSV action to transform the file contents into a



### All-Rack 600mm Deep Wall Mount Data



[600mm Wide 600mm Deep Racky Rax Wall Mounted Cabinet , 800mm x 600mm](#)

Our range of 600mm wall mounted data cabinets have been designed with ease of installation and maintenance in mind. The high specification of the cabinet means it's suitable for almost any data



[600mm Deep Wall Mount Data Cabinet , 600mm Deep Wall Mounted Data Cabinets](#)

The Lightweight Wall Mounting Cabinets feature fixed profiles and a large cutout panel at the rear. The cabinet is finished in goose grey with a lockable ash grey perspex inset door.



**Cabinet**

Upgrade your network storage capacity with the All-Rack 600mm Deep Wall Mount Data Cabinet. Designed for medium to large-scale installations, this spacious cabinet offers ample room and secure



**How can I use "e" (Euler's number) and power operation?**

How can I write  $1 - e^{(-value1^{2/2} * value2^{2})}$  in Python? I don't know how to use power operator and e.



[Power Automate - Some SharePoint List Columns Not Appearing in](#)

I'm working on a Power Automate flow that updates items in a SharePoint Online list. However, I'm facing an issue where certain columns (including Person/Group fields) are not

**market price of 600mm deep power storage cabinet , etrailer**

Find the perfect market price of 600mm deep power storage cabinet to enhance your next adventure, plenty of options in our comprehensive selection!



## Contact Us

---

For catalog requests, pricing, or partnerships, please visit:  
<https://www.bartstudio.biz>