

Photovoltaic panels East and West slope



Overview

The east or west-facing panels are likely to be effective if your roof doesn't have a south-facing slope (in the northern hemisphere). The angle of the roof is often used as the tilt for rooftop solar panels. A flatter roof requires a larger tilt angle to maximize energy production. Orientation Impact is Massive: The difference between optimal and poor solar panel placement can impact energy production by up to 30%, making proper positioning one of the most critical factors in maximizing your solar investment return. A roof is facing roughly south and tilted between 10 and 30 degrees. As a licensed roofing contractor with over 15 years in the business, I've installed solar panels on hundreds of Texas homes. But you might be wondering: does your roof direction really matter?

The simple answer is yes, it does matter - but not as much as you might think.

Photovoltaic panels East and West slope



[East-West vs. South Solar Panels: Benefits and technical evaluation](#)

Unlike south-facing panels, where peak output is reached in the middle of the day, east-west solar panels have the advantage of producing more stable output over a longer period of time.

Solar Panel Direction & Orientation: 2025 Complete Guide

East or west-facing panels generate 75-85% of optimal output, and north-facing panels produce only 45-60% depending on latitude. The difference between optimal and poor orientation



What's the Best Angle for Solar Panels? , EnergySage

South-facing solar panel systems almost always generate the most

Solar Panel Orientation: Everything You Need to Know

The east or west-facing panels are likely to be effective if your roof doesn't have a south-facing slope (in the northern hemisphere). The angle of the roof is often used as the tilt for rooftop



What's the Best Angle for Solar Panels? , EnergySage

South-facing solar panel systems almost always



[Optimizing Solar Panel Installation on East-West Facing Roofs: A](#)

Maximize energy generation with an East-West facing roof. Learn how to connect solar panel strings to a single MPPT inverter, ensuring efficiency and safety.

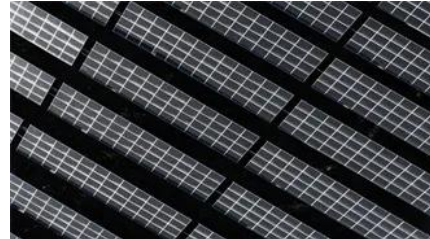


East-Facing Roofs and Solar: What to Expect

In this article, we dive into why solar panel direction is important, whether east-facing or west-facing solar panels can still be effective, what to do if your roof faces north, and other factors to



generate the most electricity, but east-west roofs can work well for solar, too. The direction is more important than the angle. Angle is rarely



East vs West vs South: Best Roof Direction for Solar Panels

Which roof direction works best for solar panels? South facing roofs generate most power, but east and west facing options still save hundreds yearly.



[Solar Panels on East and West Facing Roof: Energy Efficiency Guide](#)

East and west facing roofs perform best at slightly steeper angles than south-facing ones. We typically recommend 30-40 degree pitches for Texas homes with east-west orientations.

Solar Panel Angle Calculator

Find the best tilt angle for your solar panels by location for optimal year-round, summer, and winter performance. Includes interactive visualizer and advanced options.



[Solar panel orientation: How using East-West structures improves the](#)

The angle that a solar panel should be set at to produce the most energy in a given year is determined by the geographical latitude. A general rule for optimal annual energy production is to set

Contact Us

For catalog requests, pricing, or partnerships, please visit:
<https://www.bartstudio.biz>