

# Photovoltaic panel installation in Tibetan areas



## Overview

---

On 235 square miles of the Tibetan Plateau, uninterrupted rows of solar panels now constitute the world's largest photovoltaic farm. This vast installation, set to house over seven million modules, will ultimately generate electricity for five million households. China is launching an unprecedented renewable energy project, featuring a solar farm that spans 610 square kilometres, approximately the size of Chicago, on the Tibetan Plateau. This megaproject symbolises China's effort to balance rapid economic growth with cutting emissions, illustrating that . China's Talatan Solar Park in Qinghai is now the world's largest, supplying clean energy to millions while fueling AI data centers. According to new research, it is also gently reshaping a patch of desert into a slightly greener, cooler and more biologically active place. Illustration of a vast solar farm on the Tibetan Plateau transforming the arid . Perched at nearly 3,000 meters altitude atop the Tibetan Plateau, the sprawling Talatan complex has redefined global expectations for renewable power projects.

## Photovoltaic panel installation in Tibetan areas

---

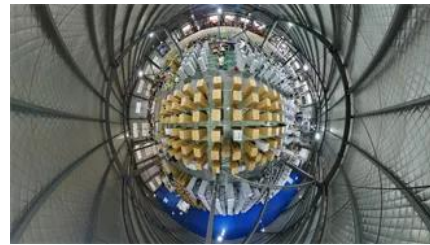


### [China's 235-Square-Mile Solar Farm Creates Unexpected Ecosystem](#)

On 235 square miles of the Tibetan Plateau, uninterrupted rows of solar panels now constitute the world's largest photovoltaic farm. This vast installation, set to house over seven million

### [Why China Built 162 Square Miles of Solar Panels on the World's](#)

China is now building at even higher elevations in mountain valleys on the Tibetan Plateau, although with smaller solar farms. Near Lhasa, the capital of Tibet, a Chinese power



### **China unveils world's largest solar park on Tibetan Plateau**

On the Tibetan plateau, China has unveiled what is set to be the largest solar park in the world, a photovoltaic development of unprecedented dimensions that has already begun to feed energy into

### **China Builds World's Largest Solar Park in Tibet**

In the remote highlands of Qinghai Province, China is building what will become the world's largest solar installation park. The Talatan Solar Park, located on the Tibetan Plateau,



### [China Builds World's Largest Solar Park in Tibet.](#)



[On the Tibetan plateau, China has installed a 16-17 GW mega solar](#)

High on the Tibetan Plateau, a vast field of solar panels is not only feeding China's power grid. According to new research, it is also gently reshaping a patch of desert into a slightly greener,



**Inside China's Massive 17GW Tibet Solar Mega-Farm: Talatan**

World's Largest Solar Installation Redefines Clean Energy Standards Perched at nearly 3,000 meters altitude atop the Tibetan Plateau, the sprawling Talatan complex has redefined global



[Ten Times the Size](#)

In a remote stretch of the Tibetan Plateau, China is rapidly expanding what is now the world's largest solar park, a sprawling renewable energy complex that already covers an area more



[Go Green with GBO: World's largest solar farm rises on Tibetan Plateau](#)

In the following sections, we explore how this Tibetan Plateau solar farm is paving the way for a greener future while navigating the trade-offs involving scale, land use, and infrastructure.

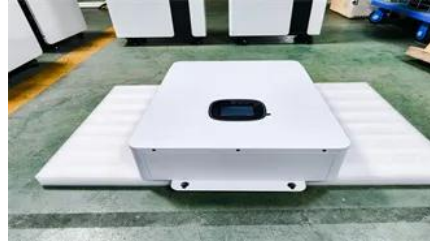


**Miles of solar panels on the Tibetan plateau**

On the Tibetan Plateau, nearly 10,000 feet high, solar panels stretch to the horizon and cover an area seven times the size of Manhattan. They soak up sunlight that is much brighter than at

### **China Solar Farm on Tibetan Plateau**

On the Tibetan plateau, where air is thin and the horizon seems endless, China is assembling the world's largest solar farm. The scale is staggering: 610 square kilometers, nearly the



## **Contact Us**

---

For catalog requests, pricing, or partnerships, please visit:  
<https://www.bartstudio.biz>