

Photovoltaic panel dual-wave components



Overview

Dual-wave panels combine perovskite layers and silicon heterojunctions to capture both visible and infrared spectra. Imagine if your solar roof could generate power from moonlight - that's the direction this technology is heading. Traditional photovoltaic systems suffer from three critical limitations: Wait, no - actually, recent studies suggest . A modern solar panel is a sophisticated layered assembly of precisely engineered components working in harmony. A photovoltaic system does not need bright sunlight in order to operate. It can also generate electricity on cloudy and rainy days from reflected sunlight. DWG format available upon request. The PV Array block implements an array of photovoltaic (PV) modules. The array is built of strings of modules connected in parallel, each string consisting of modules connected in series.

Photovoltaic panel dual-wave components



Multi-junction solar cells: What you need to know

Multi-junction solar cells are capable of absorbing different wavelengths of incoming sunlight by using different layers, making them more efficient at converting sunlight into electricity

Solar Power Components: Key Parts & Setup Guide, 2025

Confused by solar panels, batteries, and inverters? We break down every part of a solar setup so even beginners won't stress out.



[Hydrodynamic analysis of floating photovoltaic system constrained](#)

In this study, three types of single-rod rigid connector models with varying constraints are established through numerical simulation to explore the feasibility of applying single-rod rigid

Dual-Wave Photovoltaic Panels: Revolutionizing Solar Energy

Dual-wave panels combine perovskite layers and silicon heterojunctions to capture both visible and infrared spectra. Imagine if your solar roof could generate power from moonlight - that's the direction



Solar Technical Drawings



Technical drawings showing installation of integrated solar PV and solar thermal panels in slate and tile roofs and solar thermal plumbing systems

PV Array

The PV Array block implements an array of photovoltaic (PV) modules. The array is built of strings of modules connected in parallel, each string consisting of modules connected in series.



Design and Sizing of Solar Photovoltaic Systems

Dual use - Solar panels are expected to increasingly serve as both a power generator and the skin of the building. Like architectural glass, solar panels can be installed on the roofs or facades of residential

Solar panel

A solar panel is a device that converts sunlight into electricity by using multiple solar modules that consists of photovoltaic (PV) cells. PV cells are made of materials that produce excited electrons

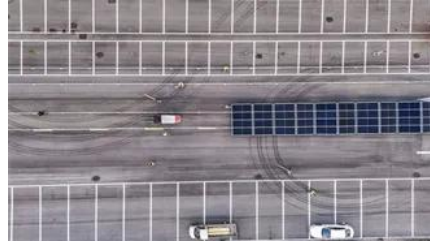


[Nonlinear hydrodynamic effects on a dual-module offshore floating](#)

Offshore floating photovoltaics (FPVs) exhibit pronounced nonlinear hydrodynamic characteristics due to complex wave-structure interactions and multi-body interactions.

Components of a Solar Panel: Complete Technical Guide

Discover the 7 essential components of solar panels, how they work together, and what to look for when choosing quality panels. Expert guide with testing data.



Contact Us

For catalog requests, pricing, or partnerships, please visit:
<https://www.bartstudio.biz>