

Permanent magnet direct drive generator



Permanent magnet direct drive generator



Generatoren mit Direktantrieb

In ABB's direct drive application the turbine and the generator are integrated to a compact structurally integrated unit. There is access to all parts.

Amazon : Permanent Magnet Generator with Base,

<3?FEATURES?: The gearless permanent magnet electric motor generator has



Product note Wind power generators Medium speed permanent

Proven slower speed drivetrain Medium speed permanent magnet generators (MS PMGs) represent a very compact, slower speed solution offering the highest efficiency with low maintenance needs. ABB

Synchronous permanent magnet motors

Synchronous permanent magnet motors Designed for those applications requiring inherent, precise, open-loop speed regulation of individual or multiple interconnected operations.



ABB's Permanent Magnet Shaft Generator

ABB's Permanent Magnet Shaft Generators for the marine industry. Designed for high efficiency, reducing emissions and reducing fuel consumption.

ABB Permanent magnet generators

ABB has strong background in medium permanent magnet design with proven reliability. In a direct drive application the turbine and the generator are integrated to form a compact and structurally integrated



ABB Motors and Generators

ABB's Industry-leading HV, MV & IEC LV Motors and Generators - Serving diverse industries with energy efficiency and superior performance.

ABB synchronous motors , Motors and Generators

ABB is the market's leading supplier of synchronous motors and generators which help customers cutting energy costs and lowering environmental impact.

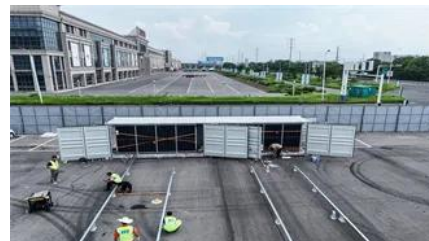


High speed permanent magnet generators technical data

ABB HS permanent magnet generators offer high power and efficiency at all speeds in the smallest size and weight. ABB PM rotor technology proves short circuit withstand.

Direct-Drive Wind Permanent Magnet Generators

Direct-drive wind permanent magnet generators offer high efficiency. PM generator with PMA or PMG design ideal for wind turbines with low RPM, no gearbox.





[Revolutionizing the shaft generator with powerful permanent magnets](#)

The company leads the field in megawatt machines using innovative permanent magnet technology, pre-assembled at its impressive Large Drive Test Centre near the university city of

Variable speed shaft generator (PTO/PTI)

Permanent magnet shaft generator system will produce electric power for all onboard systems in the most energy- and cost-efficient way. The CO2 carriers will be key to Norway's Northern Lights



Contact Us

For catalog requests, pricing, or partnerships, please visit:
<https://www.bartstudio.biz>