

Normal range of generator wind temperature



Overview

During the meeting, CTUIL representatives explained that the IEC 61400-1 standard, which applies to wind turbines, sets the normal operating temperature range between -10°C and $+40^{\circ}\text{C}$, with an extreme range of -20°C to $+50^{\circ}\text{C}$. Anything above this can cause parts such as the engine and generator cylinder to The aim of this work is to provide further insight into practical uses and limitations of implementing . When we talk about turbine generator high wind temperature requirements, we're essentially asking if these mechanical beasts sweat under pressure (spoiler alert: they kinda do). Most people don't realize that wind temperature isn't just about comfort - it's a make-or-break factor for energy . The Ministry of Power has instructed that Wind Turbine Generators (WTGs) that operate at full capacity up to 40°C , without losing efficiency, in line with the IEC 61400-1 standard, should be considered when determining the extent of grid connectivity. If WTGs start losing efficiency before 40°C . By leveraging high-dimensional operational relationships, temperature thresholds can be automatically calculated based on each individual turbine unique operating envelope, in theory minimising false alarms and providing more reliable diagnostics. This DNV GL RP can be applied as part of the technical basis for carrying out type certification of wind turbines, or component .

Normal range of generator wind temperature



[DNVGL-RP-0363 Extreme temperature conditions for wind turbines](#)

A confirmation of the generator manufacturer should be given for the temperature range within which switching on voltage is allowable (normal production operation), as well as the temperature range



Hyponatremia

Hyponatremia is the term used when your blood sodium is too low. Learn about symptoms, causes and treatment of this potentially dangerous condition.

Ferritin test

Overview A ferritin test measures the amount of ferritin in the blood. Ferritin is a blood protein that contains iron. This test can be used to find out how much iron the body stores. If a ferritin



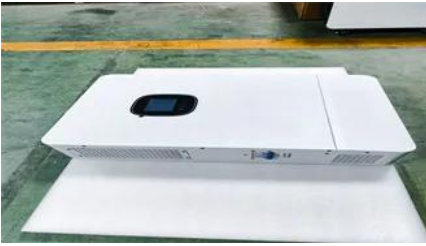
Blood pressure chart: What your reading means

Ideal blood pressure is categorized as normal. Increased blood pressure may be categorized as elevated, stage 1 or stage 2 depending on the specific numbers. A diagnosis of high



Prednisone (oral route)

Description Prednisone provides relief for inflamed areas of the body. It is used to treat a



Mental health: What's normal, what's not

Mental health is the overall wellness of how you think, behave and manage your feelings. A mental health condition may be present when patterns or changes in thinking, feeling, or behaving cause

number of different conditions, such as inflammation (swelling), severe allergies, adrenal problems,



[Do Turbine Generators Have High Wind Temperature Requirements?](#)

Most people don't realize that wind temperature isn't just about comfort - it's a make-or-break factor for energy production efficiency. Turbine generators operate best within specific temperature ranges,

[A Comparative Analysis on the Variability of Temperature Thresholds](#)

The aim of this work is to provide further insight into practical uses and limitations of implementing normal behaviour temperature models in practice, to inform practitioners, as well as



CEA Clarifies Temperature Range for Operation of

During the meeting, CTUIL representatives explained that the

Urine color

Overview Regular urine color ranges from clear to pale yellow. But certain things can change the color. Foods such as beets, blackberries and fava beans can turn urine pink or red, for



CEA issues new temperature range for wind turbine operation

During the meeting, CTUIL representatives explained that the IEC 61400-1 standard for wind turbines specifies a normal operating temperature range of -10°C to +40°C, with an extreme range of -20°C

Normal range of generator wind temperature

The normal temperature range for a diesel generator engine is between 70°C to 90°C. Temperatures above 90°C can cause the generator to overheat and cause damage to the generator



[CEA Clarifies Temperature Range for Operation of Wind Turbines](#)

During the meeting, CTUIL representatives explained that the IEC 61400-1 standard, which applies to wind turbines, sets the normal operating temperature range between -10°C and

Low blood pressure (hypotension)

What's considered low blood pressure for one person might be OK for someone else though. Low blood pressure might cause no symptoms that you notice. Or it might cause dizziness





Generator wind temperature difference range

The analysis of temperature characteristics in the generator for bladeless wind power generation is achieved by actually expected operating frequency range between 100

High blood pressure (hypertension)

Hypertension can be diagnosed by performing careful and repeated measures of the blood pressure. Blood pressure categories include normal blood pressure, defined as a systolic



HDL cholesterol: How to boost your 'good' cholesterol

HDL cholesterol levels are often lower in people who have metabolic syndrome. This is a group of conditions that includes obesity, increased blood pressure and high blood sugar levels.

[Wind Turbine Generator Condition Monitoring Using Temperature](#)

In this paper, a new condition monitoring method based on the Nonlinear State Estimate Technique for a wind turbine generator is proposed. The technique is used to construct the normal behavior model of



Triglycerides: Why do they matter?

Triglycerides are an important measure of heart health. Here's why triglycerides matter - and what to do if your triglycerides are too high.

Contact Us

For catalog requests, pricing, or partnerships, please visit:
<https://www.bartstudio.biz>