

Large-capacity wind power storage



Large-capacity wind power storage



Wind and solar need storage diversity, not just capacity

In contrast, long-duration deficits, such as multi-day or seasonal shortfalls caused by persistent low-wind or cloudy conditions, require large-scale energy-shifting storage solutions,

Strategic design of wind energy and battery storage for efficient and

This study investigates the techno economic benefits of integrating Battery Energy Storage Systems (BESS) into wind power plants by developing and evaluating optimized hybrid operation



Wind Turbine Battery Calculator

Professional tool for sizing battery storage systems for wind turbine applications. Calculate optimal battery capacity, voltage requirements, and performance metrics for wind energy storage, backup

Grid energy storage

Energy from fossil or nuclear power plants and renewable sources is stored for use by customers. Grid energy storage, also known as large-scale energy storage, is a set of technologies connected to the



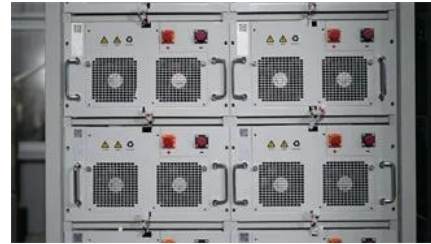


STORAGE FOR POWER SYSTEMS

Dedicated energy storage ignores the realities of both grid operation and the performance of a large, spatially diverse renewable energy source. Because power systems are balanced at the system

[Storage of wind power energy: main facts and feasibility - hydrogen](#)

This paper initially reviews the most appropriate storage system options. It explores the main factors that influence the design and selection of a suggested wind power storage systems that



Unlocking Wind Power: A Comprehensive Guide to Energy Storage

In simple terms - these systems store excess energy produced by wind turbines for use when the wind isn't providing ample power. There are various types of wind power storage systems,

Energy Storage Systems for Wind Turbines

By storing excess energy during periods of high wind production and releasing it during peak demand or low wind conditions, energy storage systems help maintain a stable grid operation.



What Size Battery Do You Need For Wind Turbine Storage

To size a battery bank for a wind turbine system, consider daily energy consumption and measuring the turbine's size. Common battery

types include lead-acid, lithium-ion, and nickel-based

10MW Wind Power Storage: Solutions for Large-Scale Renewable

Summary: Discover how 10MW wind power storage systems are transforming renewable energy grids worldwide. This guide explores technology options, real-world applications, and emerging market



Contact Us

For catalog requests, pricing, or partnerships, please visit:
<https://www.bartstudio.biz>