

# Island Microgrid Dataset



## Island Microgrid Dataset

---

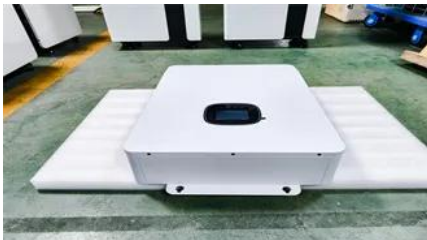


### **(PDF) Measured and forecasted weather and power dataset for**

In this direction, the current research works on the prediction of day-ahead wind energy production in island grids, aiming to generate both theoretical (expected) and actual wind power

### **Measured and forecasted weather and power dataset for**

In this dataset there are some gaps of the measured data obtained from INMET in the months of October 2020 to January 2021. It is up to the user to choose the best way to treat these gaps.



### **ISLAND MICROGRID DATASET**

Performance optimization and economic assessment of a hybrid island microgrid system in the event of uncertainties Wind speed data for the city is sourced from the NASA surface metrology dataset,

### **Measured and forecasted weather and power dataset for**

This article presents the weather and power data files from renewable sources used to solve the economic dispatch problem of a microgrid that operates in the isolated and grid-connected modes.





## Renewable Energy Microgrid Dataset , Kaggle

at <https://1:2543537>.

### [Measured weather and power dataset for management of an island](#)

This dataset presents the weather and power data files from renewable sources used to solve the economic dispatch problem of a microgrid that operates in the isolated and grid-connected



### [Power, voltage, frequency and temperature dataset from Mesa Del Sol](#)

This dataset contains power data collected from Mesa Del Sol microgrid located in Albuquerque, New Mexico. The dataset includes measurements of voltage, power, frequency and

## FLYao123/District-microgrid-dataset

This is an integrated district dataset which is main from Chong Aih's MSc project, accessible on Github [1]. This open dataset contains hourly load, market price and PV generation data of a microgrid in US.



## Contact Us

---

For catalog requests, pricing, or partnerships, please visit:  
<https://www.bartstudio.biz>