

Instructions for Use of 48V Battery Storage Cabinet



Deye Official Store

10 years
warranty



Overview

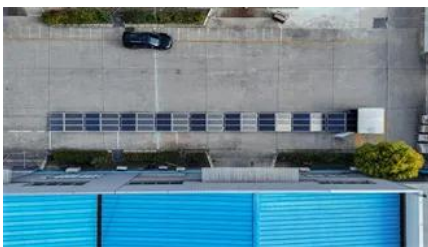
Welcome to the user manual for the Vertiv GXT5 72V External Battery Cabinet 48V (Model: GXT5-EBC48VRT2U). required for procedures involving handling, installing, and servicing batteries. Observe all battery safety precautions in this manual and in the battery instruction battery can present a risk of electrical shock and high short circuit current. Main menu page . ABBREVIATIONS AWG - American Wire Gauge In-lbs. - Inch Pounds A - Amps IP - Ingress Protection Ah - Amp hour (s) kW - Kilowatt AC - Alternating Current kWh - Kilowatt-hour AFCI - Arc-Fault Circuit Interrupter L1 - Line 1 AHJ -. This step-by-step guide is designed to help you navigate the installation with ease, ensuring you get the most out of your battery box and improve your overall product .

Instructions for Use of 48V Battery Storage Cabinet



-48 VDC Battery Cabinet Installation and User Manual (Section

Refer to "Securing the Batteries Using the Battery Retention Strap" on page 21 for instructions on securing the batteries using the buckle strap provided with the battery cabinet.



EG4 LL-S 48V 100AH USER MANUAL Pdf Download , ManualsLib

The state of the battery when placed into storage will affect how long it can be stored as well as the battery's condition when it is brought out of storage. EG4 recommends that each battery is brought to

Rack Battery Pack User Manual

Failure to follow any of the instructions or warnings in this document can result in electrical shock, serious injury, or may damage the battery and the whole system.



Vertiv GXT5 72V External Battery Cabinet 48V User Manual

Welcome to the user manual for the Vertiv GXT5 72V External Battery Cabinet 48V (Model: GXT5-EBC48VRT2U). This manual provides essential information for the safe and efficient installation,



The Ultimate Guide to 48V LiFePO4 Battery Installation



USER MANUAL Battery Module 48V/100Ah

After the battery life is terminated, the battery can continue to be used after it recycled by the professional recycling organization and do not discard it at will.

Properly install your 48V LiFePO4 battery with our expert setup guide. Get step-by-step instructions for a safe, efficient home storage system.



NetSure 211 Series Battery Cabinet Manual

The Vertiv(TM) NetSure(TM) 211 Series -48 VDC Battery Cabinet Installation and User Manual provides essential installation and safety instructions for the battery cabinet, which can be mounted in various

[How to Install Your 48V DIY Battery Box Kit: Step-by-Step Guide](#)

Installing a 48V DIY Battery Box Kit can seem daunting at first, but with the right guidance, it becomes a straightforward process. This step-by-step guide is designed to help you navigate the



48V100Ah Li-ion Battery Installation Guide.cdr

This guide provides guidance on the safe and effective installation and operation rack mounted Li-ion batteries (48V series). It also provides information on how to safely connect multiple batteries in

EG4(R) LL

Before any work begins, carefully read all safety instructions, and always observe them when working on or with the battery. The installation must follow all applicable national or local standards and regulations.



Contact Us

For catalog requests, pricing, or partnerships, please visit:
<https://www.bartstudio.biz>