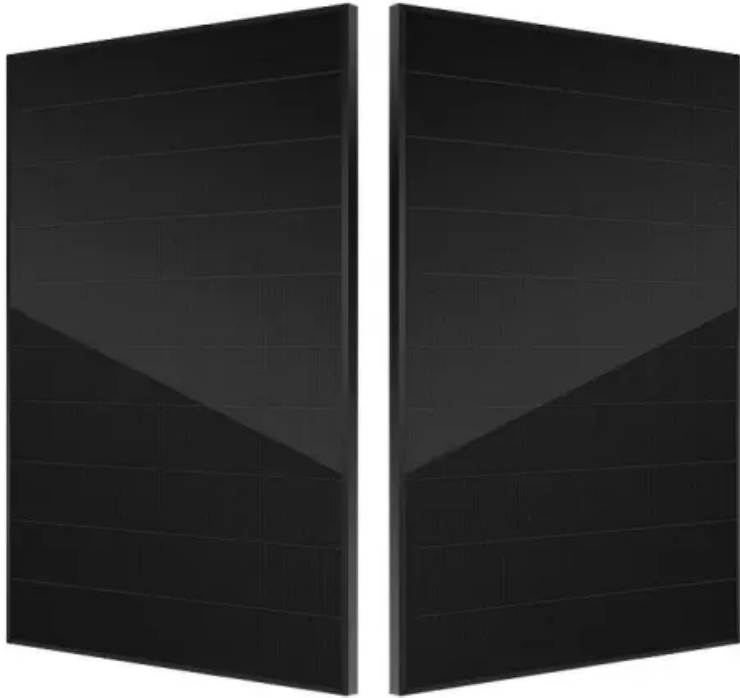


# Installation of photovoltaic DC combiner box



## Overview

---

To connect a DC PV combiner box, first connect the (+) and (-) ends of every string of solar panels to the fuses or circuit breakers within the box accordingly. The Solar Combiner Box plays a critical role in organizing multiple DC strings into a single output for the inverter. Proper installation and regular maintenance ensure it protects your array from overcurrent, surges, and ground faults - and helps avoid costly downtime. This guide walks you through the essential steps for installing a . In photovoltaic power generation systems, the correct installation of solar combiner boxes is the critical foundation for ensuring long-term stable system operation and investment returns.

## Installation of photovoltaic DC combiner box

---

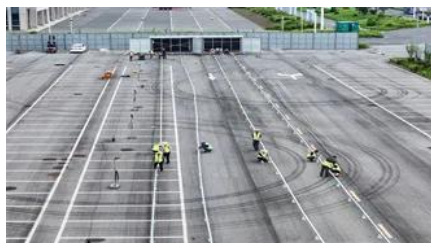


### How to Install a Solar Combiner Box - Step by Step

Install a solar combiner box by choosing the right location, mounting it securely, wiring solar strings and outputs correctly, ensuring safety, and testing before powering up.

### COMBINER INSTALLATION MANUAL

Installation Guide: This symbol accompanies notes that call attention to supplementary information that you should know to ensure optimal operation of the system.



### [Solar Combiner Box Wiring Diagram and Installation Guide Step by Step](#)

Learn how to safely install and wire a solar combiner box for DC PV systems. Step-by-step guide covers wiring, grounding, surge protection (SPD), and best practices for solar panel arrays.

### Step-by-Step Guide: Wiring Your PV Combiner Box

A PV combiner box is an essential component of a solar photovoltaic (PV) system, allowing multiple PV strings to be connected and combined into one output. The wiring diagram for a PV combiner box



### Solar Combiner Box Wiring Diagram



## 7-Point Guide to Wiring a Combiner Box Like a Pro

A combiner box wiring diagram is an essential part of any solar power system. It shows how to connect the solar panels to the combiner box, and from the combiner box to the inverter.

Learn about solar combiner box wiring diagrams, essential components, installation procedures, and common wiring configurations for efficient solar power systems.



## [Solar Combiner Box Wiring Diagram: Components and Installation](#)

This piece will address the components required for a DC PV combiner box, how to read its wiring diagram and provide a step-by-step tutorial on how to wire it safely and efficiently.

## [How to Install and Maintain a Solar Combiner Box - Step-by-Step Guide](#)

Learn how to install and maintain a solar combiner box properly. This step-by-step guide covers mounting, wiring, fuse sizing, and regular checks to keep your PV system safe and efficient.



## [Comprehensive Guide to PV Combiner Box Installation and Wiring](#)

Combiner Box Installation and Wiring Standards: Box Installation: Vertical, upright installation is mandatory; inverted installation is prohibited. Wall-mounted or column-mounted

## How to Install a Solar Combiner Box?

A professional guide for install solar combiner boxes. Step-by-step instructions, safety protocols, wiring tips & compliance standards.



## Contact Us

---

For catalog requests, pricing, or partnerships, please visit:  
<https://www.bartstudio.biz>