

# **Hytera 350m solar-powered communication cabinet wind and solar complementarity**



## Hytera 350m solar-powered communication cabinet wind and solar

---

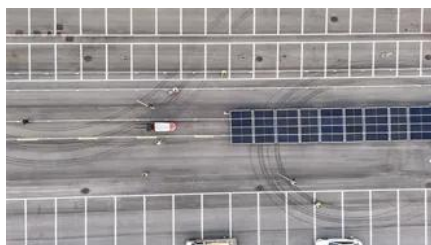


### COMMUNICATION BASE STATION WIND AND SOLAR

We are committed to excellence in solar power plants and energy storage solutions. With complete control over our manufacturing process, we ensure the highest quality standards in every solar

### [Communication Base Station Wind And Solar Hybrid Site Cabinet](#)

The invention relates to a communication base station stand-by power supply system based on an activation-type cell and a wind-solar complementary power supply system.



### Solar solar container communication station wind and solar

The wind-solar-diesel hybrid power supply system of the communication base station is composed of a wind turbine, a solar cell module, an integrated controller for hybrid energy

### Solar Container Communication Station Wind And Solar Hybrid

Hybrid solar container power systems are modular and containerized energy systems that combine solar photovoltaics, battery energy storage, and other power sources, such as diesel generators or grid



### [Solar-powered communication cabinet wind and](#)



[Hytera 350M communication base station wind and solar complementary](#)

Power Your Projects With Solar Container Solutions? We are a premier solar container and folding container solution provider, specializing in portable energy storage and mobile power systems.



[Saudi Arabia base wireless solar container communication station](#)

The invention relates to a wind and solar hybrid generation system for a communication base station based on dual direct-current bus control, comprising photovoltaic arrays, a wind-power

[solar complementary](#)

The invention relates to a communication base station stand-by power supply system based on an activation-type cell and a wind-solar complementary power supply system.



[Solar-powered communication cabinet wind and solar complementary](#)

The wind-solar complementary wireless monitoring system solution uses wind and solar energy as its primary power sources. It incorporates a highly efficient and lightweight lithium battery



## Contact Us

For catalog requests, pricing, or partnerships, please visit:  
<https://www.bartstudio.biz>