

# How many watts does a photovoltaic 550 panel have



## Overview

---

A 550 watt solar panel is designed to produce a maximum of 550 watts of electricity under optimal conditions, known as peak power output or Watt-peak (Wp). What Does a 550 Watt Solar Panel Produce?

A 550 . The efficiency of a 550-watt solar panel can be influenced by various factors, including the materials used, cell technology, and manufacturing processes. This rating is determined under Standard Test Conditions (STC), which include a solar irradiance of  $1000 \text{ W/m}^2$ , a temperature of  $25^\circ\text{C}$ , and an . Estimate daily, monthly, and yearly solar energy output (kWh) based on panel wattage, quantity, sunlight hours, and efficiency factors. Losses come from inverter efficiency, wiring, temperature, and dirt. However, this method only provides an idealized value and does not account for the complexities of a solar panel's operation. Am looking to get solar but I am researching how many panels I will need. Thank you everyone for your guidance.

## How many watts does a photovoltaic 550 panel have

---



### Standard Solar Panel Sizes And Wattages (100W-500W Dimensions)

To bridge that gap of very useful knowledge needed, we have compared and averaged the sizes of 100-watt to 500-watt solar panels available on the market. The goal here is to get to the average solar

### How Much Power Does a 550 Watt Solar Panel Generate?

Learn how much power a 550 watt solar panel produces, explore common myths, downsides, and get answers to frequently asked questions.



### 550 Watt Bifacial Solar Panels: Complete 2025 Guide & Reviews

Bifacial Technology Delivers Significant Energy Gains: 550W bifacial panels can generate 15-30% more electricity than traditional monofacial panels by capturing light from both front and rear

### How Much Energy Does A Solar Panel Produce?

Most residential panels in 2025 are rated 250-550 watts, with 400-watt models becoming the new standard. A 400-watt panel can generate roughly 1.6-2.5 kWh of energy per day, depending



### 550 Watt Solar Panel Datasheet:

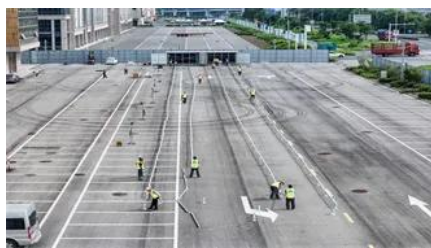


## Specifications, Features, and

With its impressive wattage, a 550-watt solar panel has the ability to generate a substantial amount of electricity. By capturing more sunlight and converting it into usable energy, these panels can deliver

### How Efficient is a 550-Watt Solar Panel?

In practical scenarios, 550 watt panels typically operate at 70-80% of their rated output due to the aforementioned factors. This means that instead of producing a full 550 watts, users can



### Solar Panel Output Calculator by Wattage , SolarMathLab

Free online solar panel output calculator - estimate daily, monthly, and yearly kWh energy production based on panel wattage, number of panels, sun hours, and system efficiency.

### [How Many Amps Does a 550-Watt Solar Panel Produce? A Definitive](#)

For a 550-watt panel, a simple calculation would involve dividing 550 watts by an assumed voltage. However, this method only provides an idealized value and does not account for the complexities of



### [Does a 550w solar panel produce 550w with 100 percent sunlight](#)

A 550-watt solar panel can produce up to 550 watts in ideal conditions, which means full, direct sunlight. Its efficiency percentage (like 20%) refers to how well it converts sunlight into electricity.

### **How many kWh does a 550W solar panel produce**

A high-efficiency 550W solar panel typically generates between 1.8 kWh and 2.4 kWh of electricity per day, assuming an average of 4.5 peak sun hours and a standard 80% system



## **Contact Us**

---

For catalog requests, pricing, or partnerships, please visit:  
<https://www.bartstudio.biz>