

# How many volts can the 12v inverter convert to



## How many volts can the 12v inverter convert to

---

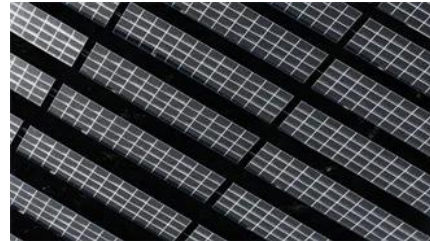


### How Efficient Are 12V to 120V Inverters?

DC to AC inverters play a crucial role in modern off-grid systems, RVs, and portable power setups by converting low-voltage DC power (typically 12 volts) into standard 120V AC electricity.

### What Size Inverter Do I Need?

This can be useful to find the right battery size for your inverter (which you can calculate using our handy guide) or for measuring the necessary volts. You can use the following formula to determine the size:



### Determining Power Inverter Sizing , Go Power Education

ALL ABOUT INVERTERS What is an inverter? AN INVERTER TAKES 12-VOLT DC POWER FROM YOUR RV BATTERIES OR SOLAR SYSTEM AND CONVERTS IT TO 120-VOLT AC TO POWER

### What Size Inverter Do I Need for My RV?

Larger inverters require higher voltage battery banks to supply the needed power safely and efficiently. If you're using 12V batteries-the most common in RVs- you can wire them in series



## Inverters Guide



### [Inverter AC to DC Amperage Conversion Calculator , Battery Stuff](#)

Just enter your AC voltage and AC amperage into the fields below and we will do all the hard calculations for you. Note: This calculator includes the typical inefficiencies to give you a

Power inverters, or simply 'inverters', are transformers that will convert a DC current into an AC current, allowing you to run higher voltage equipment from a battery or other DC power source.



### [Inverter Battery Voltage: How Many Volts Are Needed For Optimal](#)

A common choice for residential use is the 12-volt system, which can power small devices and appliances easily. However, larger systems and those designed for higher power output

### [How Many Volts Does a Home Inverter Require? A Practical Guide](#)

Home inverters typically operate at 12V, 24V, or 48V, depending on your energy needs and system design. Here's why voltage matters: 12V systems: Ideal for small setups like RVs or emergency



### **Understanding inverter voltage**

For a 12V inverter, the maximum input inverter voltage is typically around 16VDC. This safety margin provides a buffer to accommodate fluctuations in the power source and protect the

## A comprehensive guide to inverter voltage

For 12V inverters, the inverter start voltage is typically between 10V and 12V. This threshold ensures that the inverter can reliably start operation without overloading the connected



## Inverter AC to DC Amperage Conversion Calculator

Just enter your AC voltage and AC amperage into the fields below

## Contact Us

---

For catalog requests, pricing, or partnerships, please visit:  
<https://www.bartstudio.biz>