

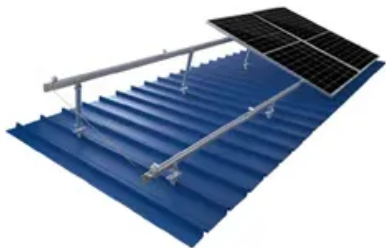
Explosion-proof type communication power cabinet for Germany Gymnasium



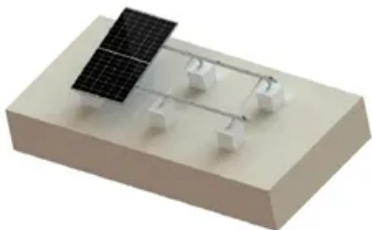
TILE ROOF SOLAR MOUNTING SYATEM



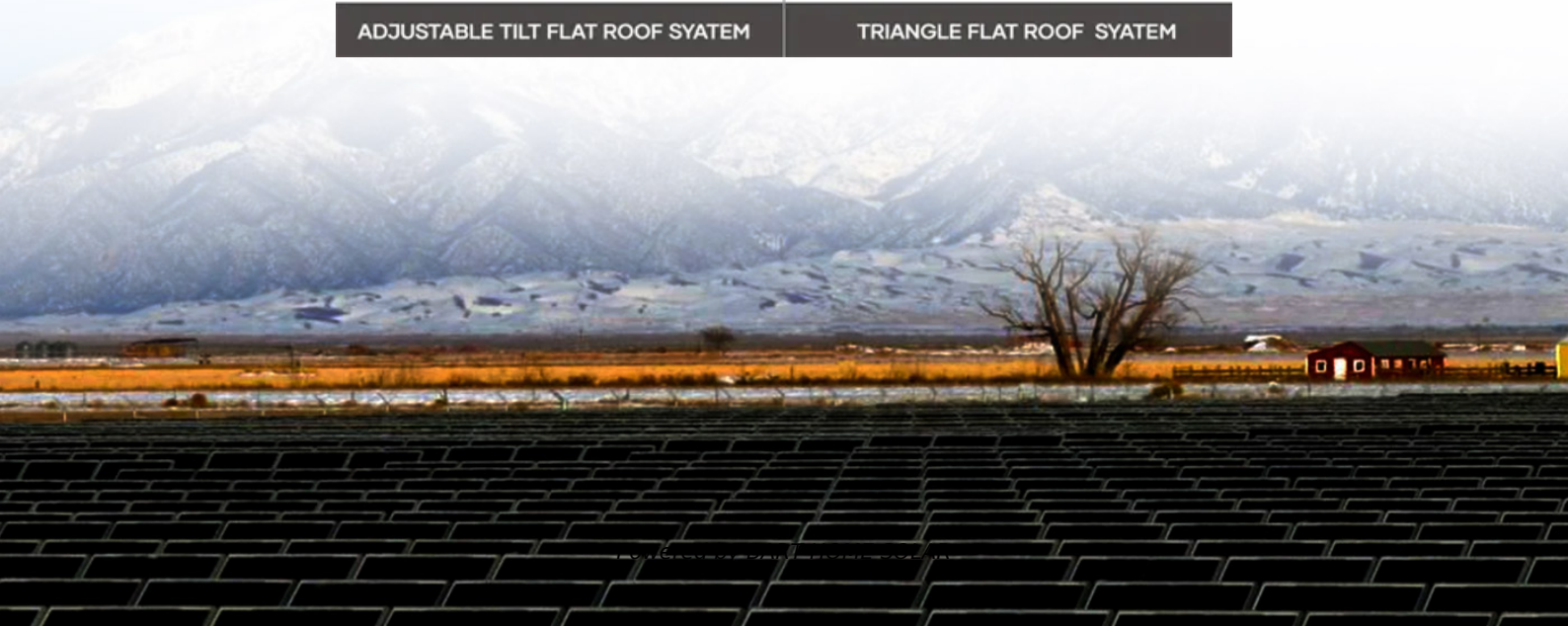
STANDING SEAM ROOF SYATEM



ADJUSTABLE TILT FLAT ROOF SYATEM



TRIANGLE FLAT ROOF SYATEM



Explosion-proof type communication power cabinet for Germany Gy



[Explosion Proof Control Station, Explosion Proof Control Cabinets](#)

Combination: This explosion proof control station includes explosion-proof electric control box unit (fixed size) + increased safety junction box unit (fixed size).

Ex Enclosure Systems

The Ex d enclosures are capable of withstanding an explosion of the installed components, as well as protecting the components from an external explosion. Furthermore, the pressurized enclosures are



[Ex Local Control Stations & Distribution Boxes](#), [Atex Delvalle](#)

Atex control stations, explosion protected control units and distribution boxes made stainless steel maritime grade AISI 316L or AISI 304L. Atex Delvalle provides a custom build facility for Hazardous

Enclosures

This type of protection is often applied for junction boxes and control stations (pushbuttons, indicator lights, switches, ammeters, etc.). These enclosures are available in GRP,



R. STAHL , EXpressure , Enclosure technology , Ex-cabinets



Hazardous Location Enclosures , nVent HOFFMAN

Rely on nVent HOFFMAN to protect your electrical controls in Division 1 or Zone 1 areas with flameproof and explosion proof enclosures. Our enclosures also improve the reliability of panels in hazardous

The new EXpressure cabinets are revolutionising the science of explosion protection. They are equipped with grids made from stainless steel wire mesh in the walls through which pressure flows in the event



Klippon(R) stainless steel enclosures

Klippon(R) Protect enclosures satisfy the extraordinary protection requirements for all kind of field applications. Secure, robust and functional enclosures with optimised sealing system ensure high IP

Energy Distribution

BARTEC offers one of the most extensive ranges of explosion-proof and substance-resistant components, devices, and systems for controlling, switching, and connecting for hazardous areas



Enclosure systems - Secure. Robust. Functional.

Klippon(R) Protect offers a wide range of solutions for standard industrial applications and applications in explosive environments across industrial sectors. Our Klippon(R) Services combine consultancy,

Stainless Steel EX Enclosures- ATEX and IEC approv

s for Zones 1 and 2 or 21 and 22 to 94/9/EC standards. With foamed-in-place silicone gaskets, these Type 304 Stainless Steel units provide reliable protection in potentially explosive atmospheres.



Contact Us

For catalog requests, pricing, or partnerships, please visit:
<https://www.bartstudio.biz>