

Energy function of grid-connected inverter



Overview

A GTI or grid-tied inverter is connected to solar panels for converting direct current (DC) generated by solar panels into alternating current (AC). But before that we will begin with the grid tie inverter working principle. What is Grid Tie Inverter and what . Grid-Following Inverters (GFLI) and Grid-Forming Inverters (GFMI) are two basic categories of grid-connected inverters.

Energy function of grid-connected inverter



[A comprehensive review of grid-connected inverter topologies and](#)

Grid-connected inverters are fundamental to the integration of renewable energy systems into the power grid. These inverters must ensure grid synchronization, efficient power conversion,

[The Ultimate Guide to On-Grid Inverters: How They Work and Why](#)

A On-Grid inverter, also known as a grid-interactive or grid-connected inverter, is a device that converts the direct current (DC) electricity generated by solar panels into alternating current (AC) electricity,



Understanding ammonia energy's tradeoffs around the world

MIT Energy Initiative researchers calculated the economic and environmental impact of future ammonia energy production and trade pathways.

Explained: Generative AI's environmental impact

MIT News explores the environmental and sustainability implications of generative AI technologies and applications.



[Next-generation geothermal energy: Promise, progress, and challenges](#)

The millimeter-wave drilling technology invented



Grid-tie inverter

A grid-tie inverter converts direct current (DC) into an alternating current (AC) suitable for injecting into an electrical power grid, at the same voltage and frequency of that power grid.

at PSFC and being commercialized by Quaise Energy is the highest-profile next-generation geothermal innovation to emerge from MIT so



Energy , MIT News , Massachusetts Institute of Technology

Massachusetts Clean Energy Center CEO MBA '12 Emily Reichert highlights the state government's unique approach to fostering and keeping clean energy innovation.

Grid Tie Inverter Working Principle

A GTI or grid-tied inverter is connected to solar panels for converting direct current (DC) generated by solar panels into alternating current (AC). A grid system works without batteries and



[A Review of Grid-Connected Inverters and Control Methods Under](#)

Grid-connected inverters play a pivotal role in integrating renewable energy sources into modern power systems. However, the presence of unbalanced grid conditions poses significant challenges to the

Grid-Connected Inverters: The Ultimate

Guide

The primary function of a grid-connected inverter is to ensure that the AC power produced is synchronized with the grid voltage and frequency, thereby enabling the safe and efficient



[MIT engineers create an energy-storing supercapacitor from ancient](#)

MIT engineers created a carbon-cement supercapacitor that can store large amounts of energy. Made of just cement, water, and carbon black, the device could form the basis for

Making clean energy investments more successful

New research emphasizes the importance of well-validated models and forecasting tools in evaluating choices for investments in clean energy technologies and policies by governments and

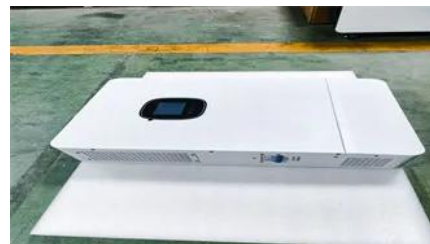


[How artificial intelligence can help achieve a clean energy future](#)

A look at how AI can be used to help support the clean energy transition by helping to manage power grid operations, plan infrastructure investments, guide the development of novel

[A new approach could fractionate crude oil using much less energy](#)

MIT engineers developed a membrane that filters the components of crude oil by their molecular size, an advance that could dramatically reduce the amount of energy needed for crude oil





Grid-Connected Inverter Modeling and Control of

This article examines the modeling and control techniques of grid-connected inverters and distributed energy power conversion challenges.

MIT Energy Initiative conference spotlights research

At the MIT Energy Initiative's Annual Research Conference, industry leaders agreed collaboration is key to advancing critical technologies amidst a changing energy landscape.



Grid-Following Inverter (GFLI)

Essentially, a grid-following inverter works as a current source that synchronizes its output with the grid voltage and frequency and injects or absorbs active or reactive power by

On Grid Inverter: Basics, Working Principle and Function

A grid-tie inverter (GTI for short) also called on-grid inverter, which is a special inverter. In addition to converting direct current into alternating current, the output alternating current can be



[Giving buildings an "MRI" to make them more energy-efficient and](#)

Founded by a team from MIT, Lamarr.AI utilizes drones, thermal imaging, and AI to identify energy waste and structural issues in buildings and recommend retrofits.

Solar Integration: Inverters and Grid Services Basics

As more solar systems are added to the grid, more inverters are being connected to the grid than ever before. Inverter-based generation can produce energy at any frequency and does not have the same



Contact Us

For catalog requests, pricing, or partnerships, please visit:
<https://www.bartstudio.biz>