

Dimensions of LONGi PV Panel 485



Overview

Power:485W;Certificate:CE UL;Cell size:182mmx182mm;Type:hbc;Place of Origin:CN;SHA;Brand Name:Longi;Model Number:LR7-54HJBB;Panel Dimensions:1800X1134X30mm;Panel Efficiency:23. com. Specifications included in this datasheet are subject to change without notice. LONGi reserves the right of final interpretation(. Established in 2000, Longi is committed to promoting renewable energy adoption by creating cost-effective, high-performance solar products, making it a top choice for both . The LONGI Solar LR5-66 HBD 485 M panel delivers 485W. Maximum current and voltage are 12. As for physical dimensions, the panel is 2073mm tall and 1133mm, wide, and weighs 30kg. It features 9-busbar half-cell technology and advanced smart soldering, ensuring superior power generation even under low light conditions. LONGi Solar 485Wp Hi-MO X10 Explorer LR7-54HVH-485M is a high-efficiency monocrystalline photovoltaic module. With a nominal power of 485W and an efficiency of 23.

Dimensions of LONGi PV Panel 485



LR7-54HVBB 470-485M (30-30&15 Frame) -BGV02 20250427-EN

Specifications included in this datasheet are subject to change without notice. LONGi reserves the right of final interpretation(. BGV02 20250427)

LONGi Hi-MO X10 485W Solar Panels Review

485W is a seriously chunky output for a panel that squeezes into a standard residential form factor - just 1800 x 1134 x 30 mm, without turning into one of those massive commercial beasts.



LonGi 485W Solar Panel (LR5-66HPH, 480-505 Watt) - TSolar

The LonGi 485W Solar Panel (LR5-66HPH 480-505M) is a high-performance solar module based on M10 Gallium-doped wafers, delivering exceptional energy efficiency. It features 9-busbar half-cell

[Longi Hi-MO X10 LR7-54HVH-485M 485W , Black Frame Solar Panel](#)

With an open-circuit voltage of 40.40V, short-circuit current of 15.23A and a maximum system voltage of 1500V DC, this module fits a wide range of residential and commercial PV applications. The



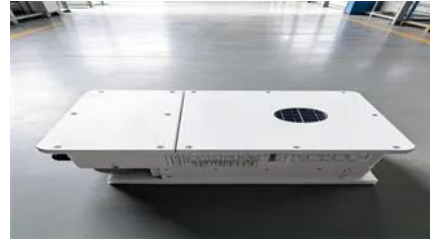


LONGI SOLAR PANEL LONGI HI-MO X10 485W , Photovoltaic Panels

Technical specifications Max power: 485 Wp
Efficacy: 23.8% System voltage (max): 1500 V
Number of cells: 108 (6 x 18) Cell material: monocrystalline
With cable: yes Cable length: +/-1200 mm

Longi 485W , Photovoltaic Distributor , PVhurt

Its dimensions and electrical parameters are calibrated for both residential and commercial applications, ensuring versatility. The panel's advanced technical specifications guarantee durability, withstanding



Longi 485W Full Black Solar Panels

Feature highlights: Longi 485W Full Black Solar Panels feature monocrystalline silicon material, 30 years power output warranty, and are designed for residential use with a sleek full black appearance.

[Longi 485W Mono 54-Cell Black Frame Solar Panel - High Efficiency](#)

Robust Durability: Built to withstand extreme weather conditions
Module Specifications: Power Output: 485W Cell Type: HPBC 2.0 CELL
Dimensions: 1800 x 1134 x 30 mm Weight: 21.6 kg Warranty: 30



Photovoltaic panel LONGI Solar LR5-66 HBD 485 M

LR5-66 HBD 485 M The LONGI Solar LR5-66 HBD 485 M panel delivers 485W. Maximum current and voltage are 12.79A and 37.93V respectively. As for physical dimensions, the panel is 2073mm

tall

LONGi Solar 485Wp Explorer HPBC Photovoltaic Panel

Built with 108 high-density cells, 3.2 mm tempered glass and a solid anodized aluminum frame, the panel offers excellent durability and mechanical strength. It is ideal for roof installations thanks to its



Contact Us

For catalog requests, pricing, or partnerships, please visit:
<https://www.bartstudio.biz>