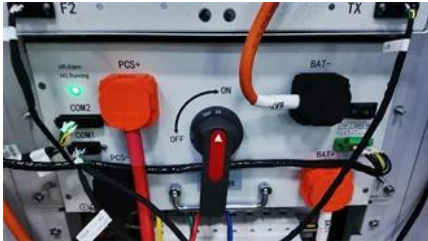


# Dc battery cabinet capacity



## Dc battery cabinet capacity

---



### Energy Storage Cabinet

\* All specifications are subject to change without notice.

### BESS , Power-Sonic Battery Energy Storage Systems

Each unit combines high-capacity lithium iron phosphate batteries, power conversion, thermal management, fire suppression, and integrated controls, ensuring unparalleled resilience, safety, and



### PWRcell 2 Battery Cabinet

Battery Enclosure Only: APKE00076 3.0 kWh  
PWRcell 2 DCB Battery Module: G0080041  
The PWRcell 2 Battery Cabinet can be configured for 9-18 kWh of storage capacity using 3.0 kWh battery modules.

### DC Power Overview

DC distribution panels for NetSure systems are designed to provide overcurrent protection for multiple small loads. Panels accept either fuses from 1A to 20A or load breakers up to 150A.



### High-Capacity DC Container for Energy Storage

Explore SynVista's advanced DC Container-an efficient, scalable BESS with 5MWh capacity, intelligent cooling, and built-in safety features.

### **BESS Cabinet**

All-in-One Sodium-Ion Energy Storage System is a fully integrated sodium-ion battery energy storage system (BESS) The cabinet combines 115kWh sodium-ion battery packs, a 100 kW PCS, BMS,



### **High quality cutting-edge DC Cabinet**

The DC cabinet is mainly to aggregate and share the current distribution of each battery rack to achieve the charge and discharge management function of each battery rack. The DC cabinet consists of DC

### **PowerBox\_DC\_Cabinet\_Datasheet\_2023\_v1**

PowerBox containers are outfitted with advanced fireproofing technology. PowerBox is managed by Adon's EMS system which allows for smart control and wireless software updates. Specifications



### **Outdoor Battery Cabinet, HindlePower , HindlePower**

Modular Design Outdoor NEMA 3R modular design easily expands and can accommodate any configuration of batteries and DC power equipment. This becomes a great alternative for substations

### **ESS\_Leaflet\_BSO-CS\_EN\_20210802**

DC voltage up to 1200Vdc. Max. installed capacity up to 220kWh per cabinet. Scalable and

flexible configuration. IP55 stainless enclosure with corrosion resistant painting. Built-in battery management



## Contact Us

---

For catalog requests, pricing, or partnerships, please visit:  
<https://www.bartstudio.biz>