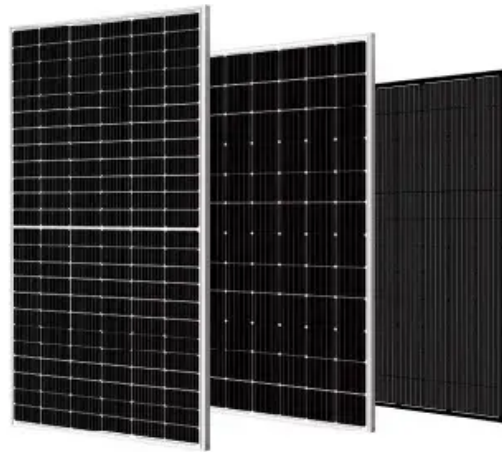


Composition of Australia s PV grid-connected inverter



Overview

This document provides an overview of the formulas and processes undertaken when designing (or sizing) a grid connected PV system. It is based on the guidelines originally developed in Australia for the Solar Energy Industries Association (Now Clean Energy Council). If the system contains ELV wiring installed by a non-licensed person, then a minimum level of inspection by the electrician prior to closing the PV array isolators would include: an open circuit voltage test on each PV . Grid-connected inverters for use in Australia must comply with the prescribed Australian Standards. The CEC list is regularly updated and can be found on the CEC website: [3](#). Copyright 2012 While all care has . This document outlines the requirements for connecting embedded generation to the Ausgrid network. Embedded generators are capable of being connected in parallel to Ausgrid's network and may include inverter energy systems (such as solar PV and batteries), as well as rotating machines (such as . Grid-connected systems have two main components, the solar panel array on the roof, and a grid-interactive inverter, connecting into the household's switchboard and electricity meter.

Composition of Australia s PV grid-connected inverter



FAQ: Changes to Inverter Standards

In August 2024, Standards Australia released a new version of AS/NZS 4777.1 Grid connection of energy systems via inverters Part 1: Installation requirements (AS/NZS 4777.1:2024).

ARENA Knowledge Sharing for Grid Forming Inverter BESS

The work represents the first 3 stages of a four-stage process for the development and acceptance of inverter based system strength technology as illustrated in the following diagram.



GRID-CONNECTED PV SYSTEMS

This document provides an overview of the formulas and processes undertaken when designing (or sizing) a grid connected PV system. It is based on the guidelines originally developed in Australia for

AEMO , AS/NZS 4777.2 - Inverter Requirements standard

It was identified that as much as 40% of grid-connected inverters installed with rooftop solar PV systems since 2016 may not comply with some of the mandatory settings prescribed in AS/NZS 4777.2:2015



GRID-CONNECTED PV SYSTEMS



Grid-Connected PV Systems Design and Installation

Grid-connected inverters for use in Australia must comply with the prescribed Australian Standards. The Clean Energy Council (CEC) provides a list of these approved inverters.



Section 3: Grid-connected solar explained , solar.vic.gov

Grid-connected systems have two main components, the solar panel array on the roof, and a grid-interactive inverter, connecting into the household's switchboard and electricity meter.



Figures 1 & 2 show 2 types of typical interconnection of a grid connected PV system. Examples of the individual components are shown in Figures 3 to 7. IEC standards use a.c. and d.c. for alternating



GRID-CONNECTED SOLAR PV SYSTEMS

In order to facilitate the efficient design of PV systems the inverter nominal AC power output cannot be less than 75% of the array peak power and it shall not be outside the inverter manufacturer's



[A comprehensive review of grid-connected inverter topologies and](#)

This comprehensive review examines grid-connected inverter technologies from 2020 to 2025, revealing critical insights that fundamentally challenge industry assumptions about

Embedded generation

Embedded generators are capable of being connected in parallel to Ausgrid's network and may include inverter energy systems (such as solar PV and batteries), as well as rotating machines (such as



Contact Us

For catalog requests, pricing, or partnerships, please visit:
<https://www.bartstudio.biz>