

Communication Base Station EMS Budget Company



Overview

The article discusses the costs associated with building and maintaining a communication base station, categorizing them into initial setup costs such as site acquisition, design and engineering, equipment procurement, construction and installation, permits and licensing, and . The article discusses the costs associated with building and maintaining a communication base station, categorizing them into initial setup costs such as site acquisition, design and engineering, equipment procurement, construction and installation, permits and licensing, and . The current national policies and technical requirements related to electromagnetic radiation administration of mobile communication base stations in China are described, including laws and regulations on electromagnetic radiation management, electromagnetic environmental impact assessment system . On average, staffing can account for over 50% of total EMS business expenses. Vehicle Maintenance and Fuel Costs: The operation of ambulances can incur yearly maintenance costs of around \$5,000 to \$10,000 per vehicle, with fuel expenses adding another \$15,000 to \$25,000 depending on the service . What Operating Costs Emergency Medical Service?

You're running an Emergency Medical Service: main operating costs are CCP Labour (the largest monthly cash outflow), insurance and liability premiums, office rent and charging-station leases, dispatch software SaaS fees, and vehicle energy and . Communication base station setups will usually include a wide array of different technologies, including power supplies, data servers, head end, radio repeaters, and communication systems that allow for high-speed continuous information flow. It can also be used as part of a leaky feeder system in . According to the recent Medicare Ground Ambulance Data Collection System (GADCS) report, labor (including wages and benefits) represents 69% of the cost of ambulance service delivery, so it makes sense that the more resources deployed in the system, the higher the cost. Advanced . Running an Emergency Medical Service (EMS) demands intense capital planning and high recurring fixed costs Your initial monthly fixed overhead, covering facility rent, insurance, dispatch software, and administrative salaries, starts near \$63,450 in 2026 This figure excludes the substantial cost of .

Communication Base Station EMS Budget Company



COMMUNICATION BASE STATION EMS BUDGET COMPANY

Overall, this study provides a clear approach to assess the environmental impact of the 5G base station and will promote the green development of mobile communication facilities.

EMS Running Costs: \$63K Fixed Monthly, \$11M Cash Needed;

Establishing the minimum sustainable monthly budget for the Emergency Medical Service requires summing the fixed operating costs of \$63,450 with projected clinical payroll and



Communication Base Station Ems And Other Costs

Browse our articles and resources about communication-base-station-ems-and-other-costs. Also covering energy management systems and energy storage system standards.

The true cost of a 911 call: Breaking down EMS economics

Discover how emergency medical services balance staffing, deployment, and underfunded reimbursements. Learn how to communicate the true cost of ambulance delivery to



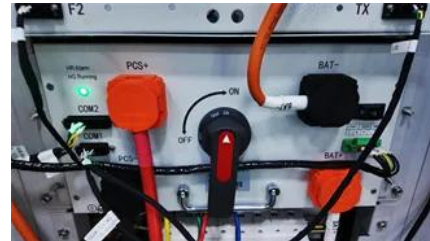
Communication base station EMS and other costs



[What is the cost of building and maintaining a communication base station ?](#)

Building and maintaining a communication base station is a complex process that involves various costs. These costs can be broadly categorized into two main categories: initial setup costs and ongoing

Action: As the EMS economic crisis continues, ambulance agencies should review policies related to billing for TIP services. The cost for an agency to respond to a call in which a patient was treated, but



[List of Federal Financial Assistance Programs Funding Emergency](#)

This list identifies federal financial assistance programs (i.e., grants, loans, cooperative agreements) that support emergency communications investments. Periodic updates will be posted on this page as

NEMSAC_Final_Advisory_EMS_System_Funding_Reimburseme

To promote more cost-effective care and recognize the professional healthcare role EMS provides, there must be a fundamental shift in funding paradigm to one based on performance and patient care



Communication Base Station EMS Budget Company

With its independently developed communication base station product series, the company supports customers in urban, suburban/rural signal coverage, subway/railway tunnels, urban

Emergency Medical Service monthly costs and 1Y-5Y revenue

CCP labour consumes the largest share of monthly cash, followed by insurance and steady occupancy and charging leases-these are the core drivers of emergency medical service



Contact Us

For catalog requests, pricing, or partnerships, please visit:
<https://www.bartstudio.biz>