

Can communication base stations be used at the same time



Overview

Duplexer: Duplexers are used to enable the same antennas to be used for both transmitting and receiving at the same time. Even though the technology behind the antennas themselves is sophisticated . In this video, Blair from Convergent Radio explains how to set up a two-way radio as a base station and why a mobile radio can be a smart solution for your building, plant, or shack. A RAN resides between user equipment, such as a mobile phone, a computer or any remotely controlled machine, and provides the connection .

Base station (or base radio station, BS) is - according to the International Telecommunication Union 's (ITU) Radio Regulations (RR) [1] - a " land station in the land mobile service. " A base station is called node B in 3G, eNB in LTE (4G), and gNB in 5G. In particular, we formulate a base station scheduling problem to determine which base stations can be scheduled to simultaneously transmit, without causing .

Can communication base stations be used at the same time



Cross-link interference in TDD networks and how to tackle it

In cellular communication between a base station and user equipment (UE), simultaneous transmission and reception is typically accomplished using different resources for

AnyTone Mobile as a Base Station, Monitor VHF and UHF at the

In this video, Blair from Convergent Radio explains how to set up a two-way radio as a base station and why a mobile radio can be a smart solution for your building, plant, or shack.



Base station

Each base station appears as a single channel on the dispatch center control console. In a properly designed dispatch center with several staff members, this allows each dispatcher to communicate

5g base station architecture

5G base stations often use Massive Multiple Input Multiple Output (MIMO) technology and beamforming to enhance spectral efficiency and coverage. Massive MIMO involves using a large



Enhancing Radio Systems with Control Station Combiners

Depending on the radio system frequencies in



Base Stations

Base stations form a key part of modern wireless communication networks because they offer some crucial advantages, such as wide coverage, continuous communications and an array of

use, the simultaneous operation of these multiple control stations can experience co-location interference problems - such as intermodulation, desensitization



LTE 4G & 5G Radio Access Network (RAN)

Understanding Radio Access Network (RAN) in 4G & 5G Lte
What Components Are Used to Make Up A Radio Access Network?
Ran Base Stations
The Ran Controller
Evolution of The Ran For 5G and Beyond
For More Information
RAN components include a base station and antennas that cover a specific region depending on their capacity, as well as core network including a RAN Controller. In modern LTE networks an EPC is required at the core. Recent evolution of RAN architecture divides the user plane from the control plane into separate elements. User data messages can then See more on cablefree Wikipedia

Base station - Wikipedia

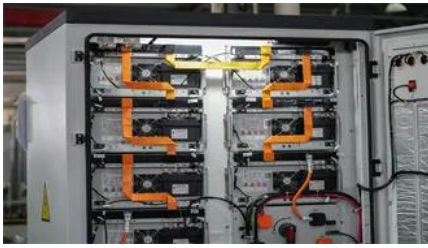
Each base station appears as a single channel on the dispatch center control console. In a properly designed dispatch center with several staff members, this

[Understand Cellphone Basestation Technology](#)
>> [Electronics Notes](#)

Several options can be used including fibre optic links, microwave links (typically microwave links are for shorter distance, e.g. between nearby base stations), and on some occasions satellites



may be used



./cdf.eps

In particular, we formulate a base station scheduling problem to determine which base stations can be scheduled to simultaneously transmit, without causing excessive interference to any user of any of

Two Base Stations: Are They Enough for Your Network Needs?

In conclusion, while two base stations may be enough for personal or small business use, don't hesitate to explore further options if you anticipate scalability or increased demands in the future.



LTE 4G & 5G Radio Access Network (RAN)

A modern multi-band LTE Base station may transmit on more than one carrier, with the ability of Carrier Aggregation across multiple bands to provide higher user throughput.

Contact Us

For catalog requests, pricing, or partnerships, please visit:
<https://www.bartstudio.biz>