

Can a 6v solar panel be directly connected to a 5v water pump inverter



Overview

Attempting to run a pump directly from a solar panel is a recipe for failure. A passing cloud, the time of day, or atmospheric haze can cause the voltage to drop or surge dramatically. Technically yes, but only with a specially designed DC solar pump system. Can You Run a Water Pump on Solar Power?

Yes, a water pump can run on solar power . To connect a DC water pump to solar panels, you must match the pump's operating voltage to the solar panel's output, typically using a solar charge controller or a linear current booster to stabilize power. This direct connection is simple and efficient, eliminating the need for complex inverters or batteries for daytime operation, making it a cost-effective choice for many applications.

Can a 6v solar panel be directly connected to a 5v water pump inverter



How to Connect Solar Panel to Water Pump

While it's technically possible for you to connect a solar panel directly to an AC or DC water pump, it's not advisable to do so. Solar panels' irregular output can damage the pump over

How To Connect A Solar Panel To A Water Pump (Step By Step)

Can I connect a solar panel directly to a water pump? You could connect a solar panel directly to a water pump. It is not a good idea, though. The erratic pulse of electricity produced by the



How to Connect a DC Water Pump to Solar Panels

Yes, you can connect a solar panel directly to a DC water pump, but it is only recommended for "direct-drive" applications where varying flow rates are acceptable.

[Can a 6v solar panel be directly connected to a 5v water pump](#)

Connecting a standard AC pump or a simple DC pump directly to a solar panel will likely fail due to mismatched voltage, leading to poor performance and motor burnout.



[How To Pair Solar Panels with Your Pump](#)

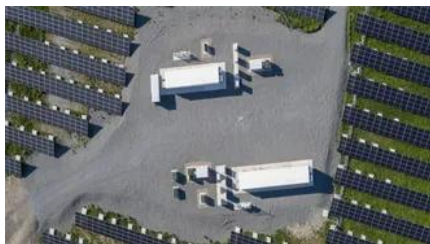


[Inverter for Optimal Output ?](#)

Here is the complete guide on how you can pair your solar panels with a pump inverter to ensure good results. This technology drastically changes the way they interact with pump inverters, making it

Can you connect a solar panel directly to a water pump?

Yes, you can run a water pump straight from a solar panel, especially if it's a DC pump designed for this purpose. This direct connection is simple and efficient, eliminating the need for complex inverters or



Can I Connect a Solar Panel Directly to a Water Pump?

Yes, you can connect a solar panel to a water pump, but it requires specific components to ensure safe and efficient operation. Don't leave yet-understanding system design is key to long-term savings

Can I run a pump directly from a solar panel?

Connecting a standard AC pump or a simple DC pump directly to a solar panel will likely fail due to mismatched voltage, leading to poor performance and motor burnout.



Off-Grid Solar Without Battery [Explained in Detail]

Since solar panel power is DC, you can connect it directly to the converter. Your solar panels should be wired in parallel (depending on the DC-

DC converter). This will make the voltage

Can You Connect Solar Panels Directly to Load?

If you are going to use electronics or appliances with your solar panel, direct load is not advisable. There is no guarantee it will work and you will likely damage the panel and/or load. You should get an



Contact Us

For catalog requests, pricing, or partnerships, please visit:
<https://www.bartstudio.biz>