

Are large commercial complexes suitable for energy storage



Overview

In particular, multi-unit housing, office complexes, and production plants benefit significantly from energy storage systems, which help manage peak loads, store excess energy, and ensure that there is adequate power supply during outages or during periods of high demand. A commercial energy storage system refers to large-scale energy storage solutions used by businesses, industries, and commercial buildings. Unlike residential storage, which is typically small-scale, or utility-scale projects serving the grid, commercial systems are sized to meet the specific needs of . There are more types of power-using equipment in commercial complex scenarios, and the area is characterized by dense foot traffic and small space for equipment installation. At the same time comes with the demand for charging vehicles in the parking lot (large short-time load), Dyness' highly . Energy storage is essential for various types of buildings. Essential for energy efficiency.

Are large commercial complexes suitable for energy storage



Is energy storage suitable for large commercial complexes

Combining on-site renewable energy sources and thermal energy storage systems can lead to significant reductions in carbon emissions and operational costs for the building owner. Yes,

[Complete Guide to Commercial and Industrial Battery Storage Systems](#)

Unlike commercial systems for small and medium businesses, large-scale commercial systems usually range from 100 kW to MW-level utility projects and are engineered for higher



Are large commercial complexes suitable for energy storage

This paper presents a comprehensive review of the most popular energy storage systems including electrical energy storage systems, electrochemical energy storage systems, mechanical energy

Why Is Commercial Energy Storage Critical for Large-Scale

Yes, commercial energy storage systems can be retrofitted into most existing commercial buildings. The installation process typically requires an assessment of available space, electrical



Commercial Complex-Commercial and



Industrial Energy Storage

Commercial complex energy storage scenarios have more types of power-using equipment, dense regional foot traffic, and little space for equipment installation.

Commercial Energy Storage Solutions: A Complete Guide for

This article explores the different types of commercial energy storage solutions, their key applications, and how businesses can choose the right technology to maximize return on investment.

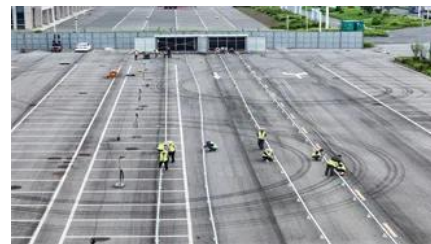


Are commercial buildings suitable for energy storage why

This article provides an in-depth analysis of the core differences between commercial energy storage, residential energy storage, and grid-scale energy storage systems, helping

Commercial Energy Storage Systems: Types, Costs

Learn how commercial energy storage systems work, from battery storage to thermal solutions. Explore benefits, costs, and strategies for C&I facilities.



[Energy storage systems for commercial buildings in dense urban](#)

Commercial, private, and governmental entities are increasingly interested in the solutions that battery energy storage systems (BESS) can provide. However, these energy storage systems

What buildings need energy storage? , NenPower

Commercial buildings also epitomize the necessity for energy storage systems, particularly in urban areas where energy demands can be erratic. Large office complexes with diverse



Contact Us

For catalog requests, pricing, or partnerships, please visit:
<https://www.bartstudio.biz>